



isel[®] *From Components to Systems*

ALU-T-PROFILES with ACCESSORIES



**CONNECTION AND
ANGLE PROFILES**



**FRAME AND
RECTANGULAR PROFILES**



**HOLLOW- AND
STAND PROFILES**



**CLAMPING AND
MOUNTING PROFILES**



Clamping connector SV2



Angle connector WV 1



Angle connector WV 2



T-slot nut magnet

...for best quality and price...



36132 EITERFELD HE SSE



Im Leibolzgraben 16	
Land area	ca. 52.000 m ²
Effective area	ca. 16.100 m ²

Phone	+49 (0) 6672-898-228
Monday - Thursday	08:00 - 15:45 Uhr
Friday	08:00 - 14:00 Uhr

36124 EICHENZELL HE SSE



Bürgermeister-Ebert-Straße 40	
Land area	ca. 30.000 m ²
Effective area	ca. 11.900 m ²

Phone	+49 (0) 6659-981-700
Monday - Thursday	07:30 - 16:30 Uhr
Friday	07:30 - 14:00 Uhr

D-36466 DERMBACH THURINGIA



Untere Röde 2	
Land area	ca. 35.600 m ²
Effective area	ca. 16.300 m ²

Phone	+49 (0) 36964-84-500
Monday - Thursday	07:30 - 16:30 Uhr
Friday	07:30 - 14:00 Uhr

D-13627 BERLIN



Adam-von-Trott-Straße 6/8	
Land area	ca. 21.800 m ²
Effective area	ca. 17.900 m ²

Phone	+49 (0) 30 34099-134
Monday - Thursday	07:30 - 16:30 Uhr
Friday	07:30 - 14:00 Uhr

HISTORY

The **isel-group** was founded in 1972 in Eiterfeld under the name ISERT-Elektronik as a one-man company. The company objectives during the initial years were the production and sales of systems and components based on

– printed circuit board production –

From these modest beginnings the **isel-group** has developed into a manufacturer and provider of electronics, software, automation systems, point of purchase display accessories and lifestyle consumer goods. The basis for all of our products and developments has been and continues to be innovative product design, efficient production and patented innovations.

Currently, the **isel-group** has 4 plant locations in Germany with a total of over 1,500,000 sq ft and several sales offices around the world.

From our modest beginnings we are a vertically integrated company with manufacturing plants for production and quality control, offices, warehouses and shipping facilities. The growth and success of the **isel-group** was and is based on the motivated, well-educated and experienced staff.

Besides salary and wages, we show our appreciation to our staff with our own **company pension VIU**, as well as additional bonuses based on our success.

PROGRAM

- spindle and linear drives
- machine and vehicle parts
- aluminum profiles and frames
- linear guides and rotating devices
- CNC machines and systems
- laser and water jet cutting
- automation and logistics
- handling and robotics
- motor control units and sensors
- enclosures and control panels
- stepper and servo motors
- linear and torque motors
- promotion and sales
- scanners and digitalisier
- led- and laser applications
- video- and audio-exponates
- CAD/CAM and CNC programs
- PLC and network applications
- digitalisation and scan software
- operation and control applications
- factory and office equipment
- e-mobiles and e-scooters
- health care and wellness
- solar and wind energy



You can use our 3D CAD models and 2D drawings on Traceparts

www.tracepartsonline.net

PHILOSOPHY

The **isel-group** with over 40 years of experience and competence, stands for competitive products and solutions in the areas of mechanics, electronics, software, systems, display and lifestyle because of:

- innovation and creativity
- quality and functionality
- efficiency and modularity
- price and performance

The main objectives of the **isel-group** are the development, production, sales and service of components and systems with intelligent motion control and automation.

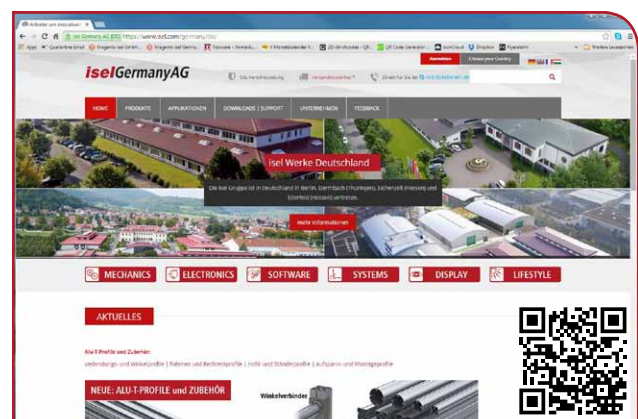
The **isel-group** is an international combine of companies and investments targeting the capital equipment and consumables market with high value added products and vertical integration. We face the global challenges of the market and competition under the slogan

**From Components to Systems
made by isel & made for isel**

The **isel-group** is committed to a humane and peaceful cooperation of all people together and with each other as well as liberal and humane working conditions regardless of race, color, religion, sex or national origin.



www.isel.com





Connection and angle profiles

- Aluminium T-profiles naturally anodised, length 6 m
- T-slot and hollow indentions for nuts and bolts
- chipless compound of blanks with quick connectors
- fitting plate material like perforated plates mirror glass, acrylic, PVC and web plates

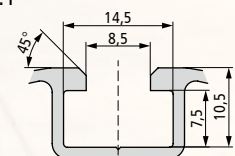
Frame and rectangular profiles

- Aluminium T-profiles naturally anodised, length 6 m
- angle connections with miter for frame and display application
- T-slots suitable for LED strip and plate fastening 1 to 8 mm
- Die cast aluminium feet and castors for mobile use and Slot covers in different colors

Options

- Cuts and coatings on request.

Dimension drawing T-slot 1:1



Hollow and stand profiles

- Aluminium T-profiles naturally anodised, length 6 m (7.6 m)
- Suitable design for stands and trade fair structures with angle connectors
- Fastening elements for advertising banners, lighting and boards
- Adjustable feet and rollers for different floors, slot nuts and bolts up to M8 threads

Clamping and mounting profiles

- Aluminium T-profiles naturally anodised, length 3 m and 6 m
- Single-sided and double-sided T-slots with 25 and 50 mm raster
- Clamping plates for machines, tables and linear guides
- Slot nuts and threaded inserts for M4 to M8



INHALT

isel-Group in Germany	2
isel-group History, Philosophy, Program	3
Alu-T-Profiles	4 - 5
Connection and angle profiles	6 - 11
Frame and rectangular profiles	12 - 14
Frame and stand profiles	15
Hollow- and stand profiles	16 - 19
Clamping and mounting profiles	20 - 21
Special offers and special profiles	22
Special profiles and accessories	23
Accessories for aluminium T-profiles	24 - 33
Acrylic, multi-skin and foam sheets	34
Stainless steel handles	35
Frame feet and castors	36 - 37
Monitor brackets	38 - 39
Product examples	40 - 41
Index	42

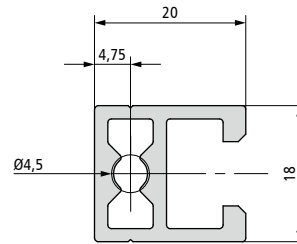




PV 20



Weight	0.42 kg/m	Moment of inertia Ix	0.60 cm ⁴
Part no. 6 m	201046 6000	Moment of inertia Iy	0.62 cm ⁴
		Moment of resistance Wx	0.67 cm ³
		Moment of resistance Wy	0.54 cm ³



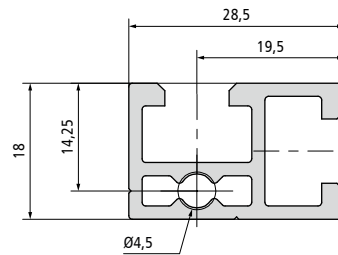
- Aluminium, naturally anodised
- 1 T-slot insert for slot nuts
- 1 hollow insert for M5/M6 screws
- Standard length: 6000 mm

Profile cover for PV 20
RAL 7012 / Basalt grey
Part no.: 209001 0107
10 units

PV 28



Weight	0.51 kg/m	Moment of inertia Ix	0.74 cm ⁴
Part no. 6 m	201115 6000	Moment of inertia Iy	1.54 cm ⁴
		Moment of resistance Wx	0.72 cm ³
		Moment of resistance Wy	1.02 cm ³

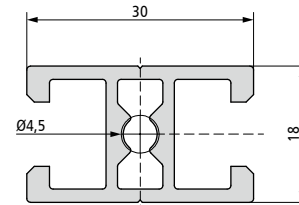


- Aluminium, naturally anodised
- 2 T-slot inserts for slot nuts
- 1 hollow insert for M5/M6 screws
- Standard length: 6000 mm

PV 30



Weight	0.55 kg/m	Moment of inertia Ix	0.90 cm ⁴
Part no. 6 m	201047 6000	Moment of inertia Iy	1.47 cm ⁴
		Moment of resistance Wx	1.00 cm ³
		Moment of resistance Wy	0.98 cm ³



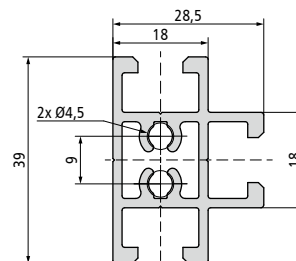
- Aluminium, naturally anodised
- 2 T-slot inserts for slot nuts
- 1 hollow insert for M5/M6 screws
- Standard length: 6000 mm

Profile cover for PV 30
RAL 7012 / Basalt grey
Part no.: 209001 0108
10 units

PV 29

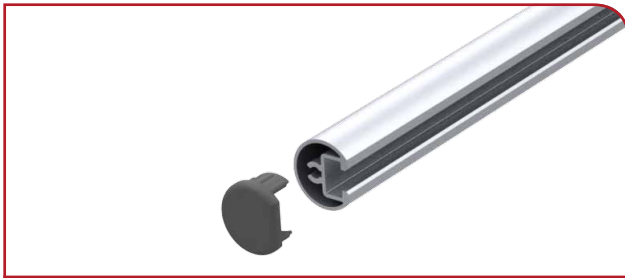


Weight	0.87 kg/m	Moment of inertia Ix	3.57 cm ⁴
Part no. 6 m	201078 6000	Moment of inertia Iy	2.26 cm ⁴
		Moment of resistance Wx	1.83 cm ³
		Moment of resistance Wy	1.34 cm ³

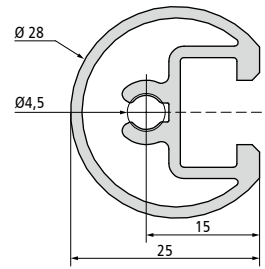


- Aluminium, naturally anodised
- 3 T-slot inserts for slot nuts
- 2 hollow inserts for M5/M6 screws
- Standard length: 6000 mm

PV 25



Weight	0.54 kg/m	Moment of inertia I _x	1.01 cm ⁴
Part no. 6 m	201048 6000	Moment of inertia I _y	1.37 cm ⁴
		Moment of resistance W _x	0.72 cm ³
		Moment of resistance W _y	1.02 cm ³



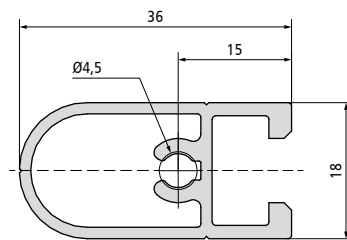
- Aluminium, naturally anodised
- 1 T-slot insert for slot nuts
- 1 hollow insert for M5/M6 screws
- Standard length: 6000 mm

Profile cover for PV 25
RAL 7012 / Basalt grey
Part no.: 209001 0095
10 units

PV 36



Weight	0.52 kg/m	Moment of inertia I _x	0.84 cm ⁴
Part no. 6 m	201049 6000	Moment of inertia I _y	2.08 cm ⁴
		Moment of resistance W _x	0.93 cm ³
		Moment of resistance W _y	1.04 cm ³



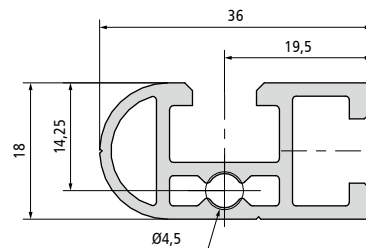
- Aluminium, naturally anodised
- 1 T-slot insert for slot nuts
- 1 hollow insert for M5/M6 screws
- Standard length: 6000 mm

Profile cover for PV 36
RAL 7012 / Basalt grey
Part no.: 209001 0096
10 units

PV 36-2



Weight	0.61 kg/m	Moment of inertia I _x	0.86 cm ⁴
Part no. 6 m	201116 6000	Moment of inertia I _y	2.46 cm ⁴
		Moment of resistance W _x	0.88 cm ³
		Moment of resistance W _y	1.36 cm ³

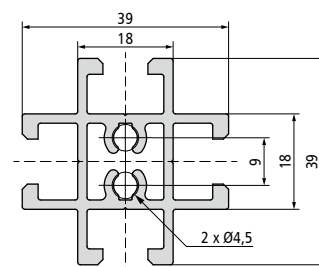


- Aluminium, naturally anodised
- 2 T-slot inserts for slot nuts
- 1 hollow insert for M5/M6 screws
- Standard length: 6000 mm

PV 39



Weight	1.0 kg/m	Moment of inertia I _x	3.89 cm ⁴
Part no. 6 m	201094 6000	Moment of inertia I _y	3.85 cm ⁴
		Moment of resistance W _x	1.99 cm ³
		Moment of resistance W _y	1.97 cm ³



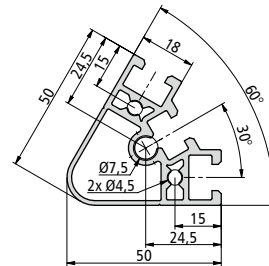
- Aluminium, naturally anodised
- 4 T-slot inserts for slot nuts
- 2 hollow inserts for M5/M6 screws
- Standard length: 6000 mm



PW 50-60



Weight	1.25 kg/m	Moment of inertia Ix	6.85 cm ⁴
Part no. 6 m	201108 6000	Moment of inertia Iy	8.45 cm ⁴
		Moment of resistance Wx	2.69 cm ³
		Moment of resistance Wy	2.82 cm ³

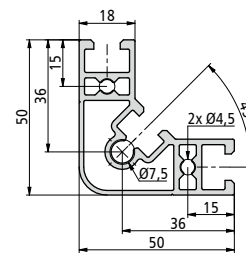


- Aluminium, naturally anodised
- 3 T-slot inserts for slot nuts
- 3 hollow inserts for M5/6/8 screws
- Standard length: 6000 mm

PW 50-90



Weight	1.35 kg/m	Moment of inertia Ix	10.7 cm ⁴
Part no. 6 m	201103 6000	Moment of inertia Iy	10.7 cm ⁴
		Moment of resistance Wx	2.74 cm ³
		Moment of resistance Wy	2.74 cm ³

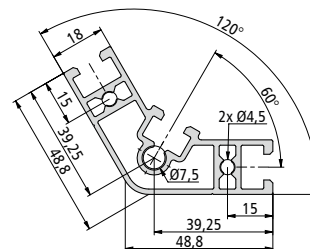


- Aluminium, naturally anodised
- 3 T-slot inserts for slot nuts
- 3 hollow inserts for M5/6/8 screws
- Standard length: 6000 mm

PW 50-120



Weight	1.44 kg/m	Moment of inertia Ix	8.92 cm ⁴
Part no. 6 m	201109 6000	Moment of inertia Iy	18.67 cm ⁴
		Moment of resistance Wx	2.88 cm ³
		Moment of resistance Wy	5.23 cm ³

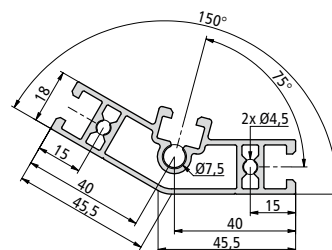


- Aluminium, naturally anodised
- 3 T-slot inserts for slot nuts
- 3 hollow inserts for M5/6/8 screws
- Standard length: 6000 mm

PW 50-150

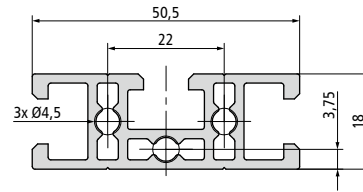


Weight	1.44 kg/m	Moment of inertia Ix	4.76 cm ⁴
Part no. 6 m	201110 6000	Moment of inertia Iy	26.96 cm ⁴
		Moment of resistance Wx	2.20 cm ³
		Moment of resistance Wy	6.74 cm ³



- Aluminium, naturally anodised
- 3 T-slot inserts for slot nuts
- 3 hollow inserts for M5/6/8 screws
- Standard length: 6000 mm

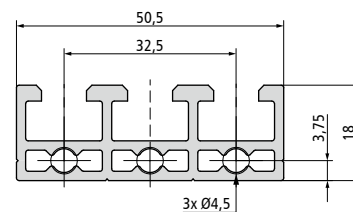
PV 51



Weight	0.93 kg/m	Moment of inertia Ix	1.42 cm ⁴
Part no. 6 m	201070 6000	Moment of inertia Iy	7.17 cm ⁴
		Moment of resistance Wx	1.36 cm ³
		Moment of resistance Wy	2.84 cm ³

- Aluminium, naturally anodised
- 3 T-slot inserts for slot nuts
- 3 hollow inserts for M5/M6 screws
- Standard length: 6000 mm

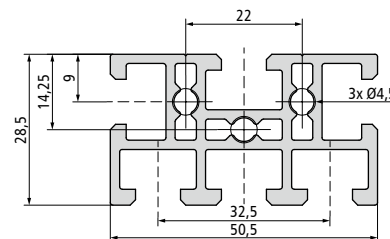
PV 53



Weight	0.93 kg/m	Moment of inertia Ix	1.15 cm ⁴
Part no. 6 m	201051 6000	Moment of inertia Iy	8.45 cm ⁴
		Moment of resistance Wx	1.1 cm ³
		Moment of resistance Wy	3.35 cm ³

- Aluminium, naturally anodised
- 3 T-slot inserts for slot nuts
- 3 hollow inserts for M5/M6 screws
- Standard length: 6000 mm

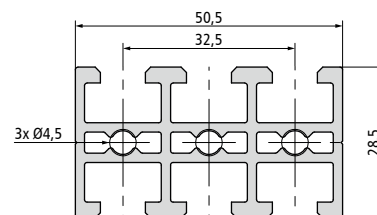
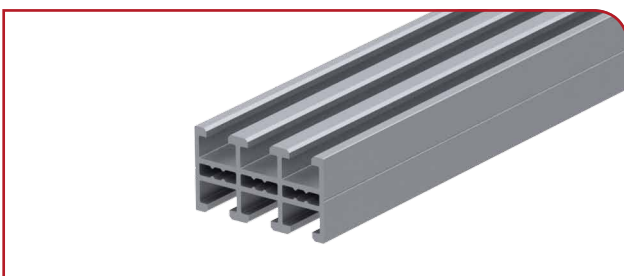
PV 54



Weight	1.27 kg/m	Moment of inertia Ix	3.67 cm ⁴
Part no. 6 m	201052 6000	Moment of inertia Iy	10.68 cm ⁴
		Moment of resistance Wx	2.45 cm ³
		Moment of resistance Wy	4.23 cm ³

- Aluminium, naturally anodised
- 6 T-slot inserts for slot nuts
- 3 hollow inserts for M5/M6 screws
- Standard length: 6000 mm

PV 56

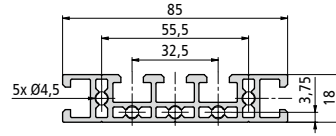


Weight	1.27 kg/m	Moment of inertia Ix	3.14 cm ⁴
Part no. 6 m	201053 6000	Moment of inertia Iy	11.97 cm ⁴
		Moment of resistance Wx	2.2 cm ³
		Moment of resistance Wy	4.74 cm ³

- Aluminium, naturally anodised
- 6 T-slot inserts for slot nuts
- 3 hollow inserts for M5/M6 screws
- Standard length: 6000 mm



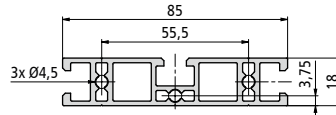
PV 85-1



Weight	1.58 kg/m	Moment of inertia Ix	2.22 cm ⁴
Part no. 6 m	201081 6000	Moment of inertia Iy	35.74 cm ⁴
		Moment of resistance Wx	2.25 cm ³
		Moment of resistance Wy	8.41 cm ³

- Aluminium, naturally anodised
- 5 T-slot inserts for slot nuts
- 5 hollow inserts for M5/M6 screws
- Standard length: 6000 mm

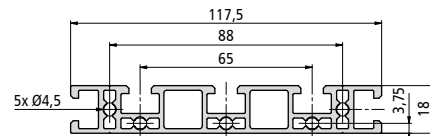
PV 85-2



Weight	1.45 kg/m	Moment of inertia Ix	2.34 cm ⁴
Part no. 6 m	201082 6000	Moment of inertia Iy	34.41 cm ⁴
		Moment of resistance Wx	2.51 cm ³
		Moment of resistance Wy	8.10 cm ³

- Aluminium, naturally anodised
- 3 T-slot inserts for slot nuts
- 3 hollow inserts for screws
- Standard length: 6000 mm

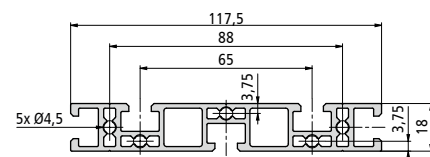
PV 120-1



Weight	2.02 kg/m	Moment of inertia Ix	3.08 cm ⁴
Part no. 6 m	201083 6000	Moment of inertia Iy	92.79 cm ⁴
		Moment of resistance Wx	3.18 cm ³
		Moment of resistance Wy	15.79 cm ³

- Aluminium, naturally anodised
- 5 T-slot inserts for slot nuts
- 5 hollow inserts for screws
- Standard length: 6000 mm

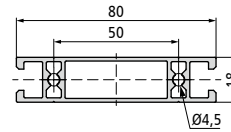
PV 120-2



Weight	2.02 kg/m	Moment of inertia Ix	3.11 cm ⁴
Part no. 6 m	201084 6000	Moment of inertia Iy	92.79 cm ⁴
		Moment of resistance Wx	3.18 cm ³
		Moment of resistance Wy	15.75 cm ³

- Aluminium, naturally anodised
- 5 T-slot inserts for slot nuts
- 5 hollow inserts for M5/M6 screws
- Standard length: 6000 mm

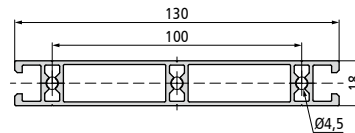
PV 80



Weight	1.13 kg/m	Moment of inertia Ix	2.03 cm ⁴
Part no. 6 m	201058 6000	Moment of inertia Iy	27.42 cm ⁴
		Moment of resistance Wx	2.26 cm ³
		Moment of resistance Wy	6.86 cm ³

- Aluminium, naturally anodised
- 2 T-slot inserts for slot nuts
- 2 hollow inserts for M5/M6 screws
- Standard length: 6000 mm

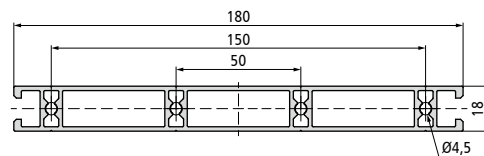
PV 130



Weight	1.71 kg/m	Moment of inertia Ix	3.16 cm ⁴
Part no. 6 m	201059 6000	Moment of inertia Iy	105.27 cm ⁴
		Moment of resistance Wx	3.51 cm ³
		Moment of resistance Wy	16.2 cm ³

- Aluminium, naturally anodised
- 2 T-slot inserts for slot nuts
- 3 hollow inserts for M5/M6 screws
- Standard length: 6000 mm

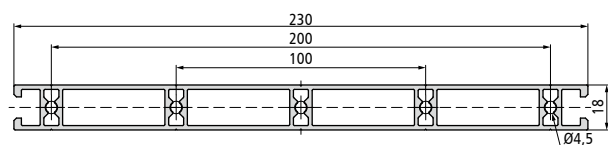
PV 180



Weight	2.5 kg/m	Moment of inertia Ix	4.64 cm ⁴
Part no. 6 m	201060 6000	Moment of inertia Iy	274.51 cm ⁴
		Moment of resistance Wx	5.16 cm ³
		Moment of resistance Wy	30.50 cm ³

- Aluminium, naturally anodised
- 2 T-slot inserts for slot nuts
- 4 hollow inserts for M5/M6 screws
- Standard length: 6000 mm

PV 230

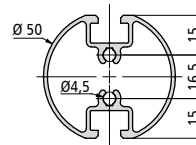


Weight	3.09 kg/m	Moment of inertia Ix	5.88 cm ⁴
Part no. 6 m	201061 6000	Moment of inertia Iy	551.16 cm ⁴
		Moment of resistance Wx	6.53 cm ³
		Moment of resistance Wy	47.93 cm ³

- Aluminium, naturally anodised
- 2 T-slot inserts for slot nuts
- 5 hollow inserts for M5/M6 screws
- Standard length: 6000 mm



PV 50-1

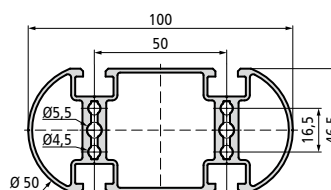
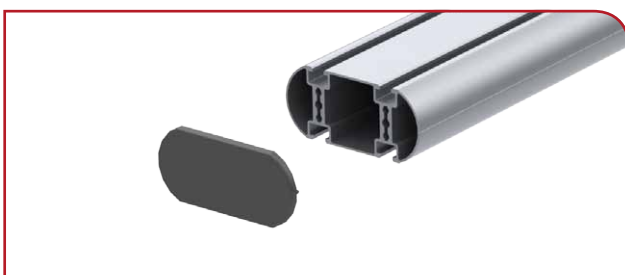


Weight	1.04 kg/m	Moment of inertia Ix	7.31 cm ⁴
Part no. 6 m	201085 6020	Moment of inertia Iy	8.83 cm ⁴
		Moment of resistance Wx	2.92 cm ³
		Moment of resistance Wy	3.79 cm ³

- Aluminium, naturally anodised
- 2 T-slot inserts for slot nuts
- 2 hollow insert for M5/M6 screws
- Standard length: 6000 mm

Profile cover for PV 50-1
RAL 7012 / Basalt grey
Part no.: on request
10 units

PV 100-2

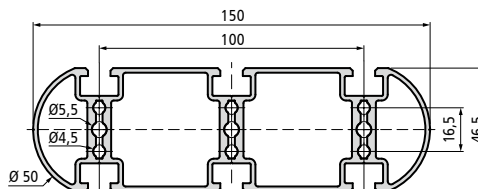
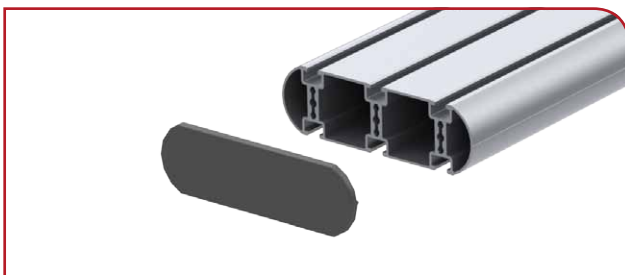


Weight	2.22 kg/m	Moment of inertia Ix	18.81 cm ⁴
Part no. /6 m	208058 6000	Moment of inertia Iy	70.93 cm ⁴
		Moment of resistance Wx	8.09 cm ³
		Moment of resistance Wy	14.19 cm ³

- Aluminium, naturally anodised
- 4 T-slot inserts for slot nuts
- 2 hollow inserts for M5/M6 screws
- Standard length: 6000 mm

Profile cover for PV 100-2
RAL 7012 / Basalt grey
Part no.: 209001 0012
10 units

PV 150-3

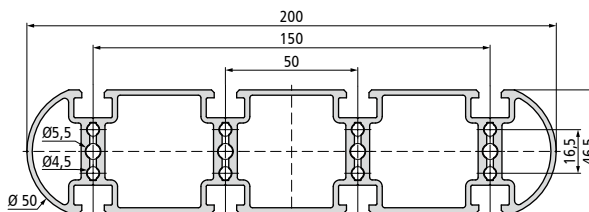
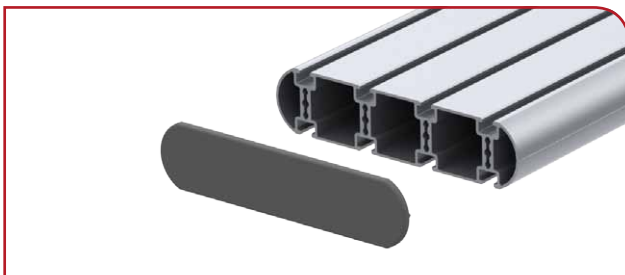


Weight	3.5 kg/m	Moment of inertia Ix	31.82 cm ⁴
Part no. 6 m	208059 6000	Moment of inertia Iy	259.99 cm ⁴
		Moment of resistance Wx	13.69 cm ³
		Moment of resistance Wy	34.66 cm ³

- Aluminium, naturally anodised
- 6 T-slot inserts for slot nuts
- 3 hollow inserts for M5/M6 screws
- Standard length: 6000 mm

Profile cover for PV 150-3
RAL 7012 / Basalt grey
Part no.: 209001 0013
10 units

PV 200-4



Weight	4.95 kg/m	Moment of inertia Ix	46.92 cm ⁴
Part no. 6 m	208060 6000	Moment of inertia Iy	655.4 cm ⁴
		Moment of resistance Wx	20.18 cm ³
		Moment of resistance Wy	65.54 cm ³

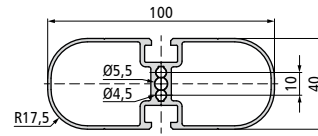
- Aluminium, naturally anodised
- 8 T-slot inserts for slot nuts
- 4 hollow inserts for M5/M6 screws
- Standard length: 6000 mm

Profile cover for PV 200-4
RAL 7012 / Basalt grey
Part no.: 209001 0014
10 units

PV 100-1



Weight	1.58 kg/m	Moment of inertia Ix	12.07 cm ⁴
Part no. 6 m	208052 6000	Moment of inertia Iy	41.12 cm ⁴
		Moment of resistance Wx	6.04 cm ³
		Moment of resistance Wy	8.22 cm ³



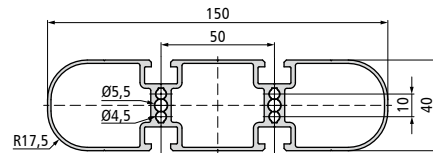
- Aluminium, naturally anodised
- 2 T-slot inserts for slot nuts
- 1 hollow insert for M5/M6 screws
- Standard length: 6000 mm

Profile cover for PV 100-1
RAL 7012 / Basalt grey
Part no.: 209001 0111
10 units

PV 150-2



Weight	2.56 kg/m	Moment of inertia Ix	19.31 cm ⁴
Part no. 6 m	208053 6000	Moment of inertia Iy	147.47 cm ⁴
		Moment of resistance Wx	9.66 cm ³
		Moment of resistance Wy	19.66 cm ³



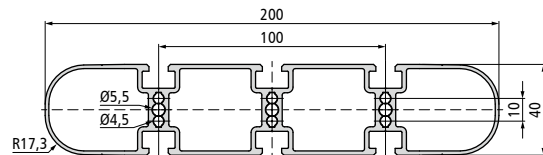
- Aluminium, naturally anodised
- 4 T-slot inserts for slot nuts
- 2 hollow inserts for M5/M6 screws
- Standard length: 6000 mm

Profile cover for PV 150-2
RAL 7012 / Basalt grey
Part no.: 209001 0234
10 units

PV 200-3



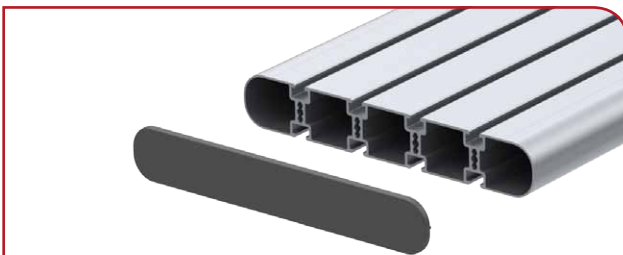
Weight	3.76 kg/m	Moment of inertia Ix	28.92 cm ⁴
Part no. 6 m	208054 6000	Moment of inertia Iy	393.67 cm ⁴
		Moment of resistance Wx	14.46 cm ³
		Moment of resistance Wy	39.37 cm ³



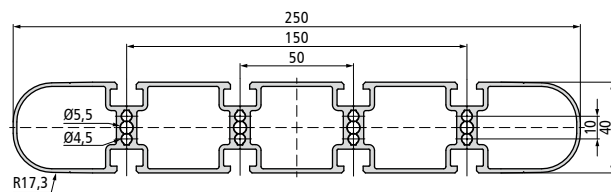
- Aluminium, naturally anodised
- 6 T-slot inserts for slot nuts
- 3 hollow inserts for M5/M6 screws
- Standard length: 6000 mm

Profile cover for PV 200-3
RAL 7012 / Basalt grey
Part no.: 209001 0235
10 units

PV 250-4



Weight	4.8 kg/m	Moment of inertia Ix	36.91 cm ⁴
Part no. 6 m	208056 6000	Moment of inertia Iy	801.16 cm ⁴
		Moment of resistance Wx	18.45 cm ³
		Moment of resistance Wy	64.09 cm ³

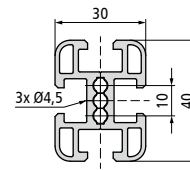


- Aluminium, naturally anodised
- 8 T-slot inserts for slot nuts
- 4 hollow inserts for M5/M6 screws
- Standard length: 6000 mm

Profile cover for PV 250-4
RAL 7012 / Basalt grey
Part no.: 209001 0110
10 units



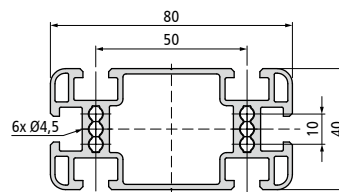
PR 30



Weight	1.15 kg/m	Moment of inertia I _x	6.02 cm ⁴
Part no. 6 m	201068 6000	Moment of inertia I _y	3.63 cm ⁴
		Moment of resistance W _x	3.01 cm ³
		Moment of resistance W _y	2.42 cm ³

- Aluminium, naturally anodised
- 4 T-slot inserts for slot nuts
- 1 hollow insert for M5/M6 screws
- Standard length: 6000 mm

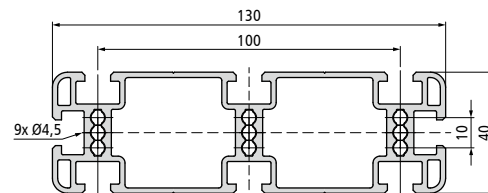
PR 80



Weight	2.23 kg/m	Moment of inertia I _x	13.65 cm ⁴
Part no. 6 m	201069 6000	Moment of inertia I _y	58.64 cm ⁴
		Moment of resistance W _x	6.83 cm ³
		Moment of resistance W _y	14.66 cm ³

- Aluminium, naturally anodised
- 6 T-slot inserts for slot nuts
- 2 hollow inserts for M5/M6 screws
- Standard length: 6000 mm

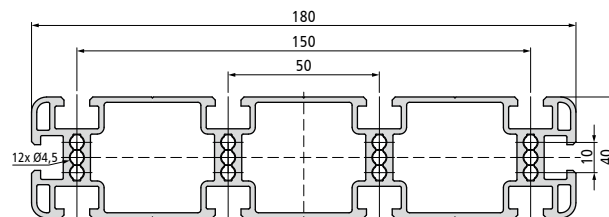
PR 130



Weight	3.15 kg/m	Moment of inertia I _x	21.55 cm ⁴
Part no. 6 m	201080 6000	Moment of inertia I _y	217.23 cm ⁴
		Moment of resistance W _x	10.78 cm ³
		Moment of resistance W _y	33.42 cm ³

- Aluminium, naturally anodised
- 8 T-slot inserts for slot nuts
- 3 hollow inserts for M5/M6 screws
- Standard length: 6000 mm

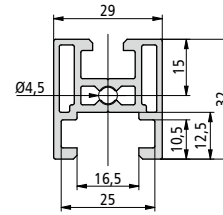
PR 180



Weight	4.13 kg/m	Moment of inertia I _x	29.18 cm ⁴
Part no. 6 m	201071 6000	Moment of inertia I _y	519.93 cm ⁴
		Moment of resistance W _x	14.59 cm ³
		Moment of resistance W _y	57.77 cm ³

- Aluminium, naturally anodised
- 10 T-slot inserts for slot nuts
- 4 hollow inserts for M5/M6 screws
- Standard length: 6000 mm

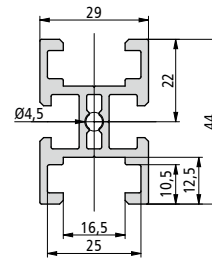
PR 32



Weight	0.87 kg/m	Moment of inertia I _x	3.29 cm ⁴
Part no. 6 m	201072 6000	Moment of inertia I _y	2.69 cm ⁴
		Moment of resistance W _x	2.27 cm ³
		Moment of resistance W _y	1.57 cm ³

- Aluminium, naturally anodised
- 1 T-slot insert for slot nuts,
1 slot insert 16 mm for multi-skin sheets
- 1 hollow insert for M5/M6 screws
- Standard length: 6000 mm

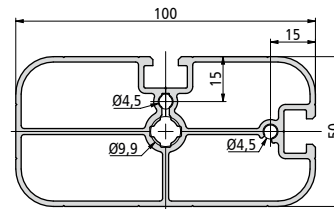
PR 44



Weight	1.10 kg/m	Moment of inertia I _x	6.18 cm ⁴
Part no. 6 m	201098 6000	Moment of inertia I _y	4.28 cm ⁴
		Moment of resistance W _x	3.86 cm ³
		Moment of resistance W _y	2.59 cm ³

- Aluminium, naturally anodised
- 2 T-slot inserts for slot nuts,
2 slot inserts 16 mm for multi-skin sheets
- 1 hollow insert for M5/M6 screws
- Standard length: 6000 mm

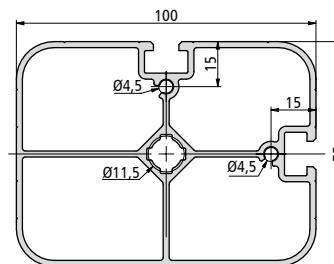
PS 100-50



Weight	2.40 kg/m	Moment of inertia I _x	24.11 cm ⁴
Part no. 6 m	200030 6000	Moment of inertia I _y	81.88 cm ⁴
		Moment of resistance W _x	9.43 cm ³
		Moment of resistance W _y	15.81 cm ³

- Aluminium, naturally anodised
- 2 T-slot inserts for slot nuts
- 3 hollow inserts for M5/6/10 screws
- Standard length: 6000 mm

PS 100-75

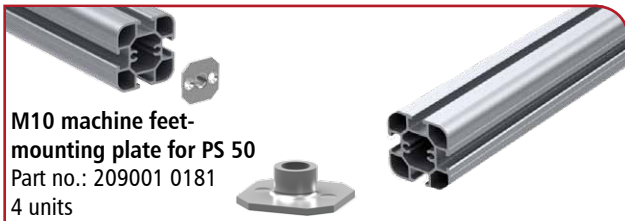


Weight	3.00 kg/m	Moment of inertia I _x	68.53 cm ⁴
Part no. 6 m	200031 6000	Moment of inertia I _y	112.7 cm ⁴
		Moment of resistance W _x	17.77 cm ³
		Moment of resistance W _y	21.83 cm ³

- Aluminium, naturally anodised
- 2 T-slot inserts for slot nuts
- 3 hollow inserts for M5/6/10 screws
- Standard length: 6000 mm

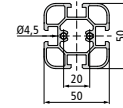


PS 50



M10 machine feet-mounting plate for PS 50
Part no.: 209001 0181
4 units

Weight	1.73 kg/m	Moment of inertia I _x	15.39 cm ⁴
Part no. 6 m	200017 6000	Moment of inertia I _y	15.90 cm ⁴
		Moment of resistance W _x	6.16 cm ³
		Moment of resistance W _y	6.36 cm ³



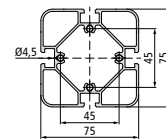
- Aluminium, naturally anodised
- 4 T-slot inserts for slot nuts
- 2 hollow inserts for M5/M6 screws
- Standard length: 6000 mm

PS 75



M10 machine feet-mounting plate for PS 75
Part no.: 209001 0254
4 units

Weight	2.65 kg/m	Moment of inertia I _x	59.15 cm ⁴
Part no. 6 m	200023 6000	Moment of inertia I _y	59.15 cm ⁴
		Moment of resistance W _x	15.77 cm ³
		Moment of resistance W _y	15.77 cm ³



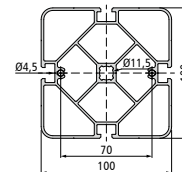
- Aluminium, naturally anodised
- 4 T-slot inserts for slot nuts
- 4 hollow inserts for M5/M6 screws
- Standard length: 6000 mm

Profile cover for PS 75
RAL 7012 / Basalt grey
Part no.: 209001 0100
10 units

PS 100



Weight	4.34 kg/m	Moment of inertia I _x	159.37 cm ⁴
Part no. 6 m	200018 6000	Moment of inertia I _y	165.52 cm ⁴
		Moment of resistance W _x	31.87 cm ³
		Moment of resistance W _y	33.12 cm ³

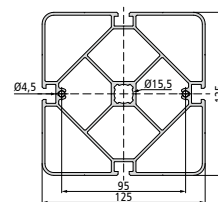


- Aluminium, naturally anodised
- 4 T-slot inserts for slot nuts
- 3 hollow inserts for M5/6/12 screws
- Standard length: 6000 mm

PS 125



Weight	5.98 kg/m	Moment of inertia I _x	351.29 cm ⁴
Part no. 6 m	200024 6000	Moment of inertia I _y	361.87 cm ⁴
		Moment of resistance W _x	56.21 cm ³
		Moment of resistance W _y	57.92 cm ³

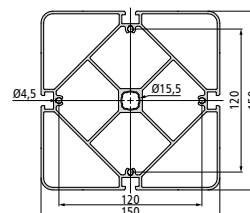


- Aluminium, naturally anodised
- 4 T-slot inserts for slot nuts
- 3 hollow inserts for M5/6/16 screws
- Standard length: 6000 mm

PS 150

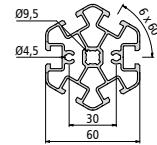


Weight	7.59 kg/m	Moment of inertia I _x	644.85 cm ⁴
Part no. 6 m	200037 6000	Moment of inertia I _y	644.85 cm ⁴
		Moment of resistance W _x	85.98 cm ³
		Moment of resistance W _y	85.98 cm ³



- Aluminium, naturally anodised
- 4 T-slot inserts for slot nuts
- 5 hollow inserts for M5/6/16 screws
- Standard length: 6000 mm

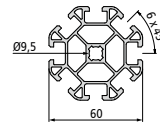
PS 60-6



Weight	2.13 kg/m	Moment of inertia I _x	21.86 cm ⁴
Part no. 6 m	200039 6000	Moment of inertia I _y	22.57 cm ⁴
		Moment of resistance W _x	6.49 cm ³
		Moment of resistance W _y	7.52 cm ³

- Aluminium, naturally anodised
- 6 T-slot inserts for slot nuts
- 3 hollow inserts for M5/6/10 screws
- Standard length: 6000 mm

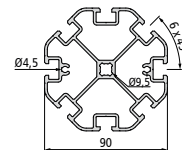
PS 60-8



Weight	2.18 kg/m	Moment of inertia I _x	22.68 cm ⁴
Part no. 6 m	200041 6000	Moment of inertia I _y	22.68 cm ⁴
		Moment of resistance W _x	7.56 cm ³
		Moment of resistance W _y	7.56 cm ³

- Aluminium, naturally anodised
- 8 T-slot inserts for slot nuts
- 1 hollow insert for M10 screws
- Standard length: 6000 mm

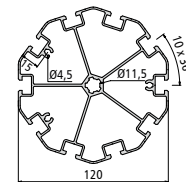
PS 90-8



Weight	3.73 kg/m	Moment of inertia I _x	91.54 cm ⁴
Part no. 6 m	200035 6000	Moment of inertia I _y	96.15 cm ⁴
		Moment of resistance W _x	20.34 cm ³
		Moment of resistance W _y	21.36 cm ³

- Aluminium, naturally anodised
- 8 T-slot inserts for slot nuts
- 3 hollow inserts for M5/6/10 screws
- Standard length: 6000 mm

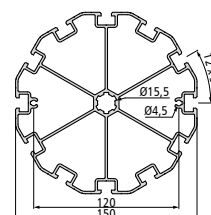
PS 120-10



Weight	4.77 kg/m	Moment of inertia I _x	211.55 cm ⁴
Part no. 6 m	200036 6000	Moment of inertia I _y	220.44 cm ⁴
		Moment of resistance W _x	35.26 cm ³
		Moment of resistance W _y	35.21 cm ³

- Aluminium, naturally anodised
- 10 T-slot inserts for slot nuts
- 4 hollow inserts for M5/6/12 screws
- Standard length: 6000 mm

PS 150-12

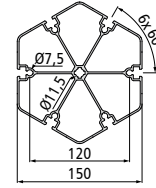
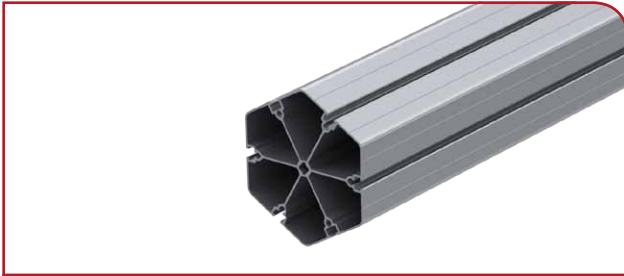


Weight	6.67 kg/m	Moment of inertia I _x	476.47 cm ⁴
Part no. 6 m	200038 6000	Moment of inertia I _y	458.07 cm ⁴
		Moment of resistance W _x	63.53 cm ³
		Moment of resistance W _y	61.08 cm ³

- Aluminium, naturally anodised
- 12 T-slot inserts for slot nuts
- 3 hollow inserts for M5/6/16 screws
- Standard length: 6000 mm



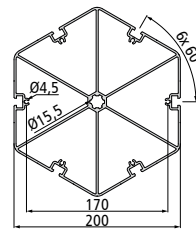
PS 150-6



Weight	6.59 kg/m	Moment of inertia Ix	432.37 cm ⁴
Part no. 6 m	200025 6000	Moment of inertia Iy	432.27 cm ⁴
		Moment of resistance Wx	56.75 cm ³
		Moment of resistance Wy	64.32 cm ³

- Aluminium, naturally anodised
- 6 T-slot inserts for slot nuts
- 7 hollow inserts for M8/12 screws
- Standard length: 6000 mm

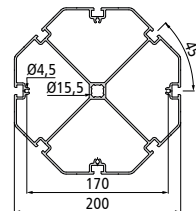
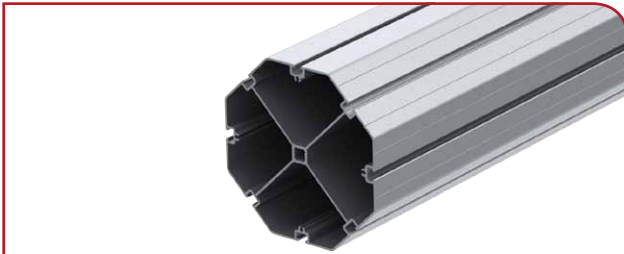
PS 200-6



Weight	10.6 kg/m	Moment of inertia Ix	1458.68 cm ⁴
Part no. 6 m	200026 6000	Moment of inertia Iy	1458.68 cm ⁴
		Moment of resistance Wx	128.52 cm ³
		Moment of resistance Wy	145.87 cm ³

- Aluminium, naturally anodised
- 6 T-slot inserts for slot nuts
- 7 hollow inserts for M5/6/16 screws
- Standard length: 6000 mm

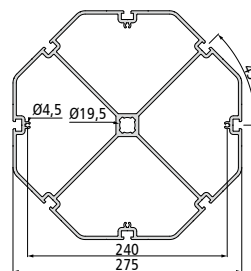
PS 200-8



Weight	8.59 kg/m	Moment of inertia Ix	1188 cm ⁴
Part no. 6 m	200027 6000	Moment of inertia Iy	1188 cm ⁴
		Moment of resistance Wx	118.8 cm ³
		Moment of resistance Wy	118.8 cm ³

- Aluminium, naturally anodised
- 8 T-slot inserts for slot nuts
- 5 hollow inserts for M5/6/16 screws
- Standard length: 6000 mm

PS 275-8

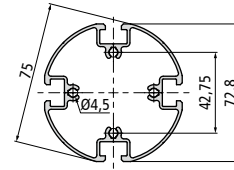


Weight	17.65 kg/m	Moment of inertia Ix	4610.96 cm ⁴
Part no. 6 m	200028 6000	Moment of inertia Iy	4610.96 cm ⁴
		Moment of resistance Wx	335.34 cm ³
		Moment of resistance Wy	335.34 cm ³

- Aluminium, naturally anodised
- 8 T-slot inserts for slot nuts
- 5 hollow inserts for M5/6/20 screws
- Standard length: 6000 mm

This Profile is a special part and not available from stock. It can be ordered only in large quantities.

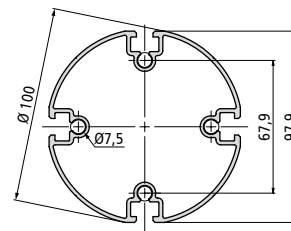
PH 75-4



Weight	1.77 kg/m	Moment of inertia I _x	33.54 cm ⁴
Part no. 6 m	201102 6000	Moment of inertia I _y	33.54 cm ⁴
		Moment of resistance W _x	9.21 cm ³
		Moment of resistance W _y	9.21 cm ³

- Aluminium, naturally anodised
- 4 T-slot inserts for slot nuts
- 4 hollow inserts for M5/M6 screws
- Standard length: 6000 mm

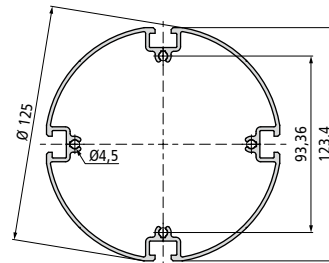
PH 100-4



Weight	2.62 kg/m	Moment of inertia I _x	96.67 cm ⁴
Part no. 6 m	201105 6000	Moment of inertia I _y	96.67 cm ⁴
		Moment of resistance W _x	19.73 cm ³
		Moment of resistance W _y	19.73 cm ³

- Aluminium, naturally anodised
- 4 T-slot inserts for slot nuts
- 4 hollow inserts for M8 screws
- Standard lengths: 6000 mm

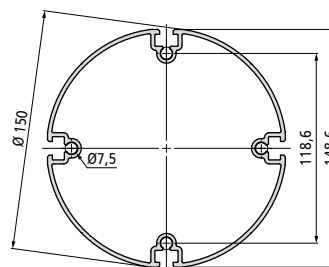
PH 125-4



Weight	2.97 kg/m	Moment of inertia I _x	186.84 cm ⁴
Part no. 6 m	201088 6000	Moment of inertia I _y	186.84 cm ⁴
		Moment of resistance W _x	30.28 cm ³
		Moment of resistance W _y	30.28 cm ³

- Aluminium, naturally anodised
- 4 T-slot inserts for slot nuts
- 4 hollow inserts for M5/M6 screws
- Standard lengths: 6000 mm and 6500 mm

PH 150-4

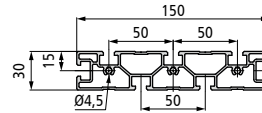


Weight	4.25 kg/m	Moment of inertia I _x	390.23 cm ⁴
Part no. 7.4 m	201107 7400	Moment of inertia I _y	390.23 cm ⁴
		Moment of resistance W _x	52.52 cm ³
		Moment of resistance W _y	52.52 cm ³

- Aluminium, naturally anodised
- 4 T-slot inserts for slot nuts
- 4 hollow inserts for M8 screws
- Standard length: 7400 mm



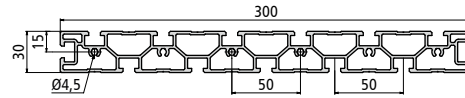
PR 150-50



Weight	3.12 kg/m	Moment of inertia I _x	12.18 cm ⁴
Part no. 6 m	201095 6000	Moment of inertia I _y	251.82 cm ⁴
		Moment of resistance W _x	8.12 cm ³
		Moment of resistance W _y	33.58 cm ³

- Aluminium, naturally anodised
- 7 T-slot inserts for slot nuts
- 3 hollow inserts for M5/M6 screws
- Standard length: 6000 mm

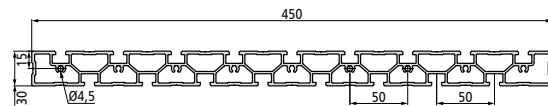
PR 300-50



Weight	6.55 kg/m	Moment of inertia I _x	25.6 cm ⁴
Part no. 6 m	201113 6000	Moment of inertia I _y	1994.76 cm ⁴
		Moment of resistance W _x	17.07 cm ³
		Moment of resistance W _y	132.98 cm ³

- Aluminium, naturally anodised
- 13 T-slot inserts for slot nuts
- 6 hollow inserts for M5/M6 screws
- Standard length: 6000 mm

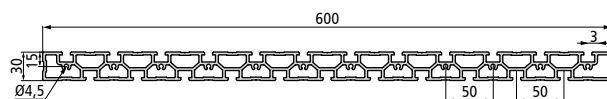
PR 450-50



Weight	10.46 kg/m	Moment of inertia I _x	42.51 cm ⁴
Part no. 6 m	201097 6000	Moment of inertia I _y	6982.28 cm ⁴
		Moment of resistance W _x	28.34 cm ³
		Moment of resistance W _y	310.32 cm ³

- Aluminium, naturally anodised
- 17 T-slot inserts for slot nuts
- 9 hollow inserts for M5/M6 screws
- Standard length: 6000 mm

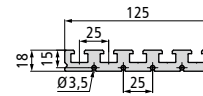
PR 600-50



Weight	17.20 kg/m	Moment of inertia I _x	64.12 cm ⁴
Part no. 3 m	201099 3000	Moment of inertia I _y	19268.13 cm ⁴
		Moment of resistance W _x	42.75 cm ³
		Moment of resistance W _y	642.27 cm ³

- Aluminium, naturally anodised
- 23 T-slot inserts for slot nuts
- 12 hollow inserts for M5/M6 screws
- Standard length: 3000 mm

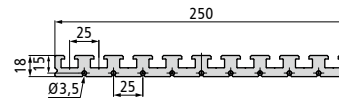
PR 125-25



Weight	4.07 kg/m	Moment of inertia I _x	4.28 cm ⁴
Part no. 6 m	201091 6000	Moment of inertia I _y	198.03 cm ⁴
		Moment of resistance W _x	4.19 cm ³
		Moment of resistance W _y	31.68 cm ³

- Aluminium, naturally anodised
- 5 T-slot inserts for slot nuts
- 4 hollow inserts for M5/M6 screws
- Standard length: 6000 mm

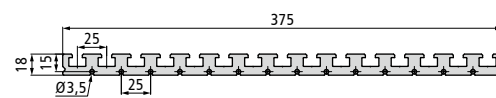
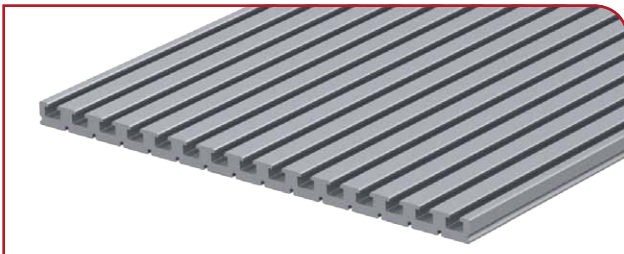
PR 250-25



Weight	8.14 kg/m	Moment of inertia I _x	8.55 cm ⁴
Part no. 6 m	201077 6000	Moment of inertia I _y	1573.62 cm ⁴
		Moment of resistance W _x	8.38 cm ³
		Moment of resistance W _y	125.89 cm ³

- Aluminium, naturally anodised
- 10 T-slot inserts for slot nuts
- 9 hollow inserts for M4 screws
- Standard length: 6000 mm

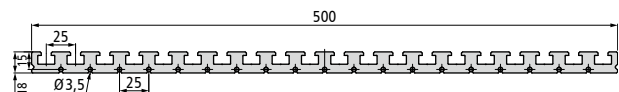
PR 375-25



Weight	12.21 kg/m	Moment of inertia I _x	12.81 cm ⁴
Part no. 6 m	201092 6000	Moment of inertia I _y	5304.73 cm ⁴
		Moment of resistance W _x	12.57 cm ³
		Moment of resistance W _y	282.92 cm ³

- Aluminium, naturally anodised
- 15 T-slot inserts for slot nuts
- 14 hollow inserts for M5/M6 screws
- Standard length: 6000 mm

PR 500-25



Weight	17.08 kg/m	Moment of inertia I _x	17.08 cm ⁴
Part no. 6 m	201093 6000	Moment of inertia I _y	12569.34 cm ⁴
		Moment of resistance W _x	16.77 cm ³
		Moment of resistance W _y	502.77 cm ³

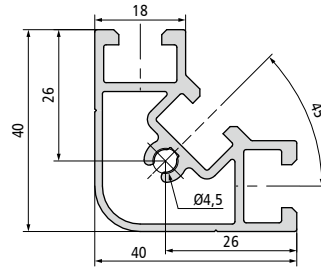
- Aluminium, naturally anodised
- 20 T-slot inserts for slot nuts
- 19 hollow inserts for M4 screws
- Standard length: 6000 mm



PW 40



Weight	0.94 kg/m	Moment of inertia Ix	4.82 cm ⁴
Part no. 6 m	201056 6000	Moment of inertia Iy	4.82 cm ⁴
		Moment of resistance Wx	2.13 cm ³
		Moment of resistance Wy	2.13 cm ³

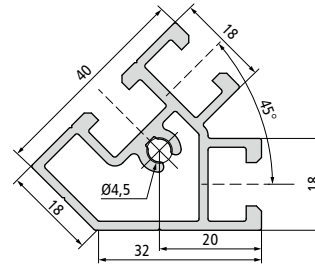


- Aluminium, naturally anodised
- 3 T-slot inserts for slot nuts
- 1 hollow insert for M5/M6 screws
- Standard length: 6000 mm

PW 45



Weight	0.96 kg/m	Moment of inertia Ix	4.65 cm ⁴
Part no. 6 m	201057 6000	Moment of inertia Iy	4.15 cm ⁴
		Moment of resistance Wx	1.84 cm ³
		Moment of resistance Wy	1.71 cm ³

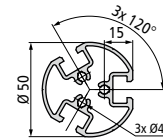


- Aluminium, naturally anodised
- 3 T-slot inserts for slot nuts
- 1 hollow insert for M5/M6 screws
- Standard length: 6000 mm

PH 50-3



Weight	1.38 kg/m	Moment of inertia Ix	9.48 cm ⁴
Part no. 6 m	201090 6000	Moment of inertia Iy	9.48 cm ⁴
		Moment of resistance Wx	3.79 cm ³
		Moment of resistance Wy	3.79 cm ³

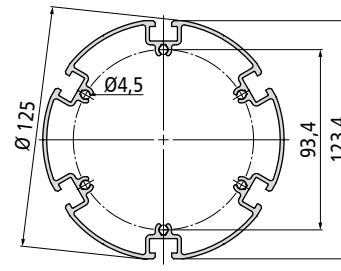


- Aluminium, naturally anodised
- 3 T-slot inserts for slot nuts
- 3 hollow inserts for M5/M6 screws
- Standard length: 6000 mm

PH 125-6



Weight	3.43 kg/m	Moment of inertia Ix	208.06 cm ⁴
Part no. 6 m	201088 6060	Moment of inertia Iy	208.06 cm ⁴
		Moment of resistance Wx	33.29 cm ³
		Moment of resistance Wy	33.29 cm ³



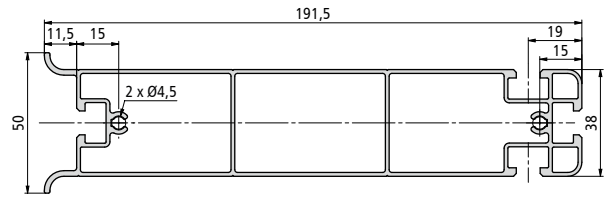
- Aluminium, naturally anodised
- 6 T-slot inserts for slot nuts
- 6 hollow inserts for M5/M6 screws
- Standard length: 6000 mm



PV 190 for leaflet dispensers



Weight	2.59 kg/m	Moment of inertia Ix	21.92 cm ⁴
Part no. 6 m	201079 6000	Moment of inertia Iy	398.63 cm ⁴
		Moment of resistance Wx	8.77 cm ³
		Moment of resistance Wy	39.45 cm ³



- Aluminium, naturally anodised
- 4 T-slot inserts for slot nuts
- 2 hollow inserts for M5/M6 screws
- Standard length: 6000 mm

T-SLOT RETAINING CLIP



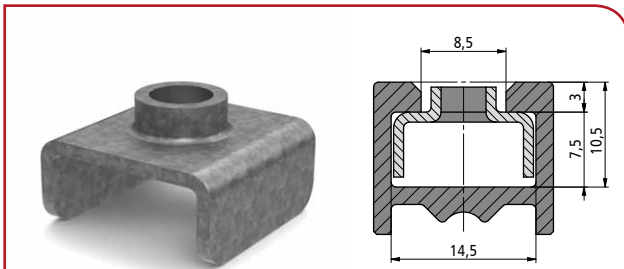
Minimum order quantity
1 PU

Packaging unit [PU]	Part number / PU
100 units	443118



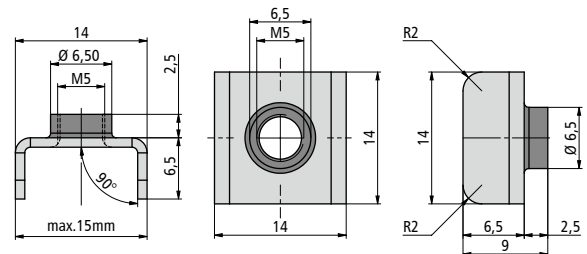
- Galvanised T-slot retaining clip made of spring steel with washer and M4x8 screw
- For click fixing e.g. of leaflet dispensers to PV 190 profile
- Simple release by tilting the T-slot retaining clip at an angle

T-SLOT FASTENER



Minimum order quantity
1 PU

Packaging unit [PU]	Part number/unit
100 units	209001 0257



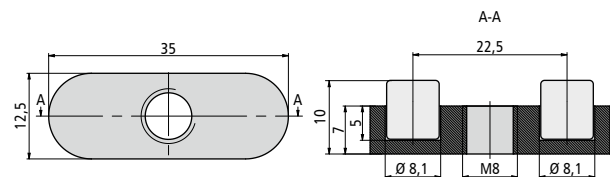
- T-slot fastener with M5 threaded nozzle
- Steel plate 1mm, galvanised
- For fixing suspensions and panels
- Can be slid into T-slot

T-SLOT NUT MAGNET



Minimum order quantity
50 units

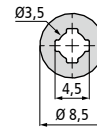
Packaging unit [PU]	Part number/unit
1 units	632501 1000



- T-slot nut made of POM with 2 magnets
- Thread for M8 grub screw with 8 mm length
- For attaching magnetic material
- Enables quick and powerful positioning



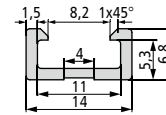
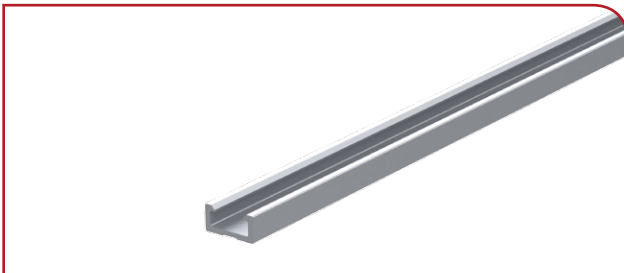
SLIDE-IN PROFILE PE 8, can be slid into standard T-slot



Weight	0.12 kg/m	Moment of inertia Ix	0.024 cm ⁴
Part no. 6 m	201075 6000	Moment of inertia Iy	0.024 cm ⁴
		Moment of resistance Wx	0.056 cm ³
		Moment of resistance Wy	0.056 cm ³

- Aluminium, naturally anodised
- 1 hollow insert for screws
- Profile fits in standard T-slot
- Standard length: 6000 mm

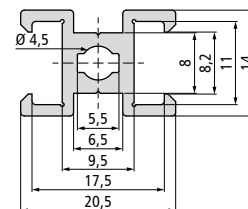
SLIDE-IN PROFILE PE 14, can be slid into standard T-slot



Weight	0.11 kg/m	Moment of inertia Ix	0.018 cm ⁴
Part no. 6 m	201062 6000	Moment of inertia Iy	0.1 cm ⁴
		Moment of resistance Wx	0.042 cm ³
		Moment of resistance Wy	0.143 cm ³

- Aluminium, naturally anodised
- 1 T-slot insert for LED strip
- Profile fits in standard T-slot
- Standard length: 6000 mm

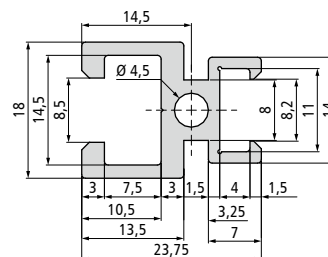
SLIDE-IN PROFILE PE 14-2, can be slid into standard T-slot



Weight	0.3 kg/m	Moment of inertia Ix	0.24 cm ⁴
Part no. 6 m	201073 6000	Moment of inertia Iy	0.33 cm ⁴
		Moment of resistance Wx	0.34 cm ³
		Moment of resistance Wy	0.32 cm ³

- Aluminium, naturally anodised
- 2 T-slot inserts for T-slot or LED strip
- 1 hollow insert for M5/M6 screws
- Standard length: 6000 mm

SLIDE-IN PROFILE PE 14-PV 20, can be slid into standard T-slot

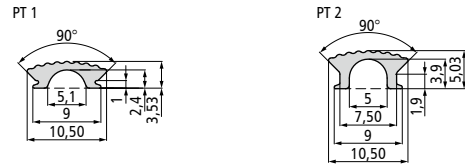
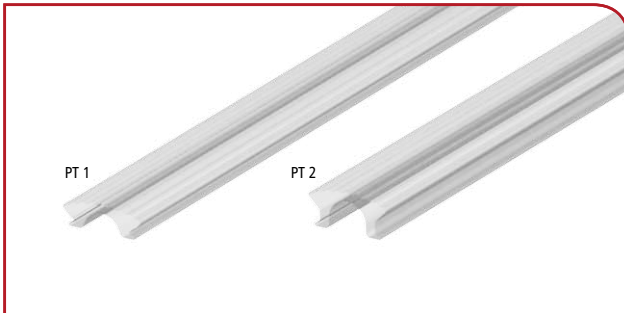


Weight	0.43 kg/m	Moment of inertia Ix	0.56 cm ⁴
Part no. 6 m	201074 6000	Moment of inertia Iy	0.64 cm ⁴
		Moment of resistance Wx	0.62 cm ³
		Moment of resistance Wy	0.51 cm ³

- Aluminium, naturally anodised
- 1 standard T-slot, 1 T-slot for LED strip
- 1 hollow insert for M5 screws
- Standard length: 6000 mm



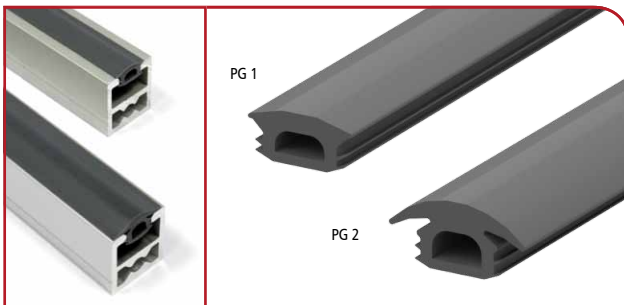
T-SLOT COVER PT 1 and PT 2



- Transparent cover for LED strips
- Ribbed plastic surface for optimal light scatter
- PT 1 for PE 14 and PT 2 for standard T-slot
- Length: max. 5000 mm

	Weight	Part no. 3 m	Part no. 5 m
PT 1	23 g/m	209001 0243	209001 0091
PT 2	28 g/m	209001 0244	209001 0092

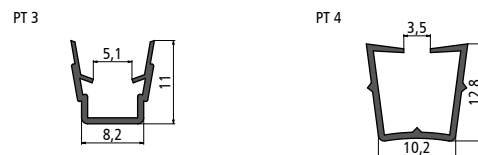
T-SLOT COVER PG 1 and PG 2



- Grey rubberised T-slot cover
- Smooth surface, high quality optics
- Size for standard T-slot
- Length: sold by the meter

	Weight	Packaging unit [PU]	Part number/PU
PG 1	39 g/m	100 m	209001 0195
PG 2	55 g/m	100 m	209001 0197

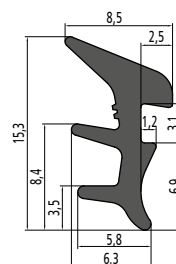
EDGING PROFILE PT 3 and PT 4



- Black edging and cover profile
- Suitable for standard T-slot
- For 3 to 6 mm washers
- Length: max. 2000 mm
- Black edging profile
- Suitable for standard T-slot
- For 1 to 3 mm washers
- Length: max. 2000 mm

	Weight	Part number/2 m
PT 3	22 g/m	209001 0093
PT 4	30.6 g/m	209001 0094

EDGING PROFILE, 1-fold



- Black edging band
- For fixing 2 to 4 mm washers
- For all T-slot inserts
- Flexible and UV stable

	Part number/1 m
Edging profile	209203

Minimum order quantity
20 m

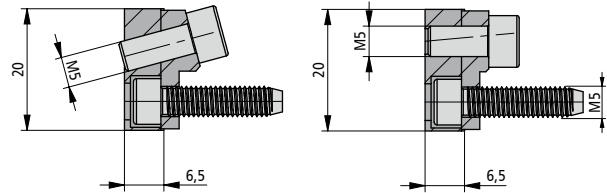


CLAMPING CONNECTOR angled and straight



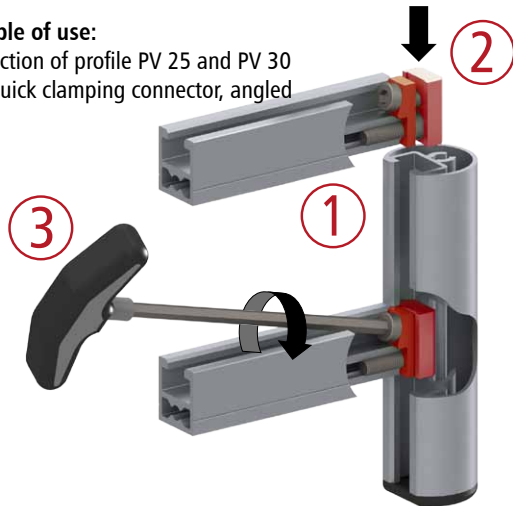
Fig. shows clamping connector angular

Clamping connector, angled	Clamping connector, straight
1x T-slot nut, 1x mounting link 15°, 2x M5 screws	1x T-slot nut, 1x mounting lug straight, 2x M5 screws
Part no./PU: 209001 0029	Part no./PU: 209001 0019



Example of use:

Connection of profile PV 25 and PV 30 with quick clamping connector, angled



Features

- Quick and easy clamping connection of aluminium T-slot profiles
- Special T-slot nut with mounting link straight, or 15° straight for simple mounting
- Good accessibility to the fixing screw
- Non-positive, positive-locking and twist-proof mounting

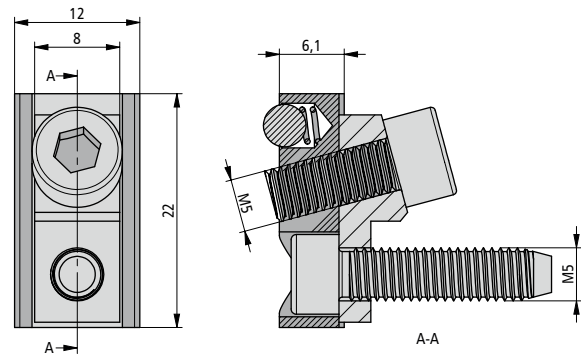
Description:

- 1) Screw clamping connector to hollow insert.
- 2) Insert slide nut into T-slot
- 3) Tighten with Allen key.

CLAMPING CONNECTOR , angled, with spring-loaded ball

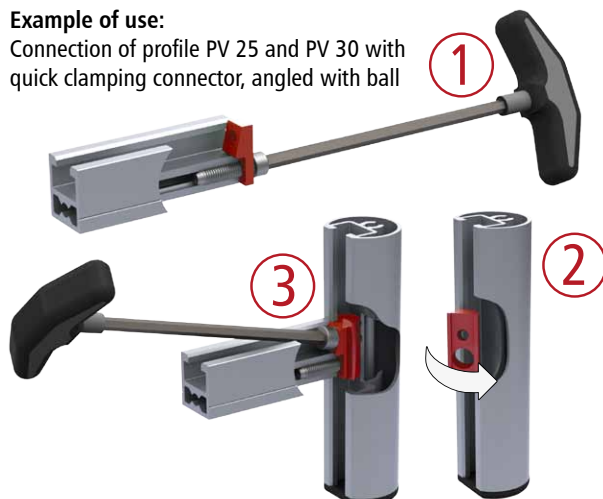


consisting of	Part no. PU 10	209001 0040
1x T-slot nut with pressure ball, 1x mounting link 15°, 2x M5 screws		



Example of use:

Connection of profile PV 25 and PV 30 with quick clamping connector, angled with ball



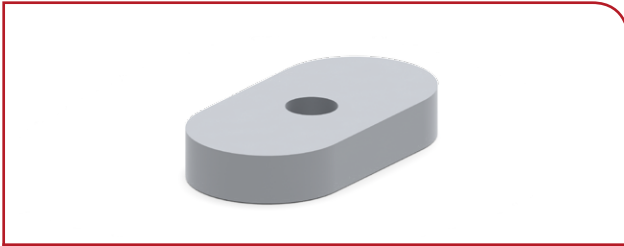
Features

- Quick and easy clamping connection of aluminium T-slot profiles
- Special T-slot nut with pressure ball and mounting link 15°
- Ideal for subsequent mounting between two aluminium T-slot profiles
- Good accessibility to the fixing screw, non-positive, positive-locking and twist-proof mounting

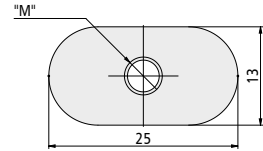
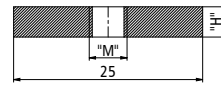
Description:

- 1) Screw clamping connector to hollow insert.
- 2) Laterally engage sliding nut in T-slot.
- 3) Place clamping connector together with sliding nut and tighten with allen key.

T-SLOT NUT 1

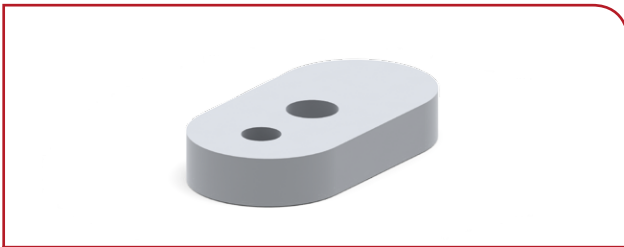


Thread	Height [mm]	Packaging unit [PU]	Part number/PU
M4	3	20	209001 0030
M5	4	20	209001 0021
M6	5	20	209001 0032
M8	6	20	209001 0034

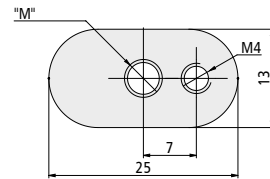
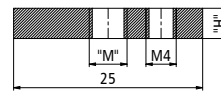


- T-slot nut for aluminium T-slot
- Clamp and expander fixing
- Material galvanised steel
- Thread M4, M5, M6 and M8

T-SLOT NUT 2

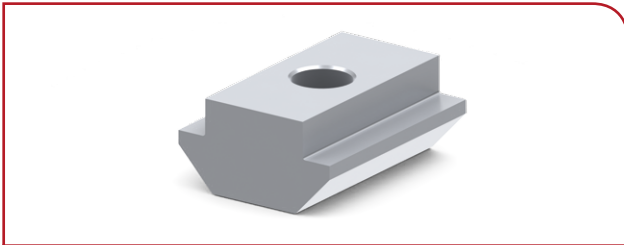


Thread	Height [mm]	Packaging unit [PU]	Part number/PU
M4	3	20	209001 0017
M5	4	20	209001 0022
M6	5	20	209001 0031
M8	6	20	209001 0033

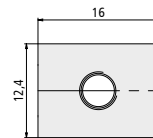
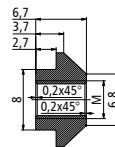


- T-slot nut for aluminium T-slot
- Clamp and expander fixing
- Material galvanised steel
- Thread M4, M5, M6, M8 and fixing M4 (incl. grub screw)

T-SLOT NUT 4

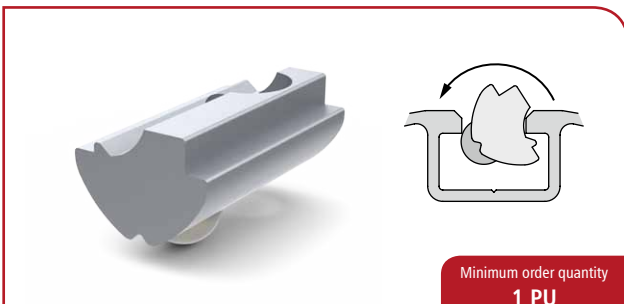


Thread	Packaging unit [PU]	Part number/PU
M5	20	209001 0055
M6	20	209001 0056
M8	20	209001 0057
M6 (stainless)	20	209001 0058



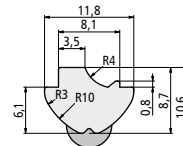
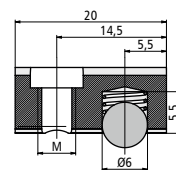
- T-slot nut for aluminium T-slot
- Clamp and expander fixing
- Thread M5, M6 and M8 (galvanised steel)
- Thread M6 stainless

T-SLOT NUT 6



Minimum order quantity
1 PU

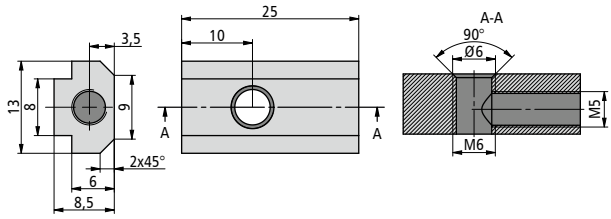
Thread	Packaging unit [PU]	Part number/unit
M6	100 units	209001 0015
M8	100 units	209001 0018



- T-slot nut with pressure ball for aluminium T-slot
- Slot nut can be retroactively tilted
- Material galvanised steel
- Thread M6 or M8



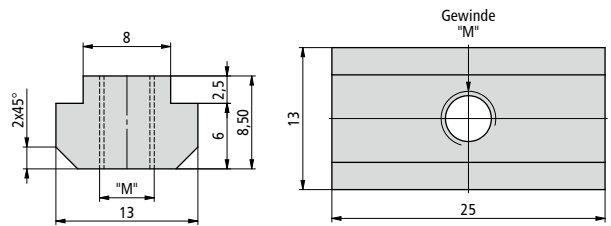
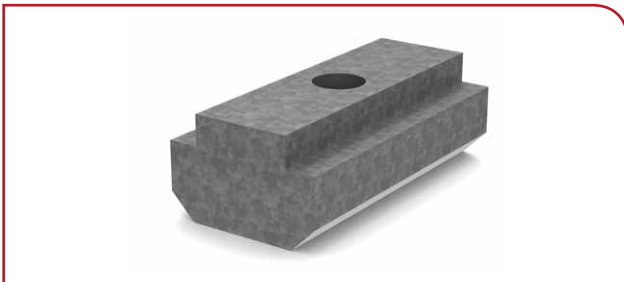
T-SLOT NUT 7



- T-slot nut galvanised steel
- Thread M6 and M5 at the front
- For angle fixing in the T-slot
- Can be slid into T-slot

Thread	Packaging unit [PU]	Part number/unit
M6	100 units	209001 0268

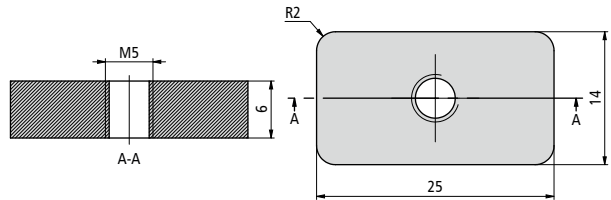
T-SLOT NUT 8



- T-slot nut long galvanised steel
- Thread M4, M5, M6
- For clamp and expander fixing
- Can be slid into T-slot

Thread	Packaging unit [PU]	Part number/PU
M4	20 units	209001 0023
M5		209001 0024
M6		209001 0025

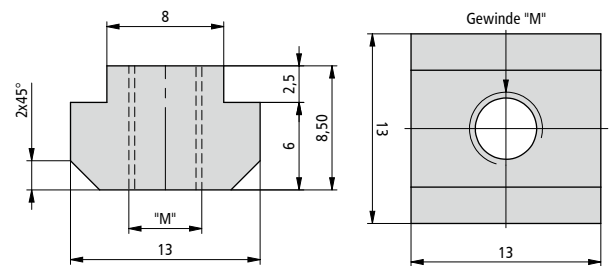
T-SLOT NUT 9



- T-slot nut galvanised steel
- Rectangular shape with M5 thread
- For clamp and expander fixing
- Can be slid into T-slot

Thread	Packaging unit [PU]	Part number/PU
M5	10 units	209001 0287

T-SLOT NUT 10



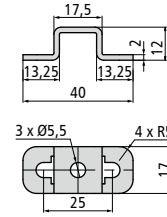
- T-slot nut short galvanised steel
- Thread M4, M5, M6
- For clamp and expander fixing
- Can be slid into T-slot

Thread	Packaging unit [PU]	Part number/PU
M4	20 units	209001 0026
M5		209001 0027
M6		209001 0028

SHEET METAL ANGLE LW 25

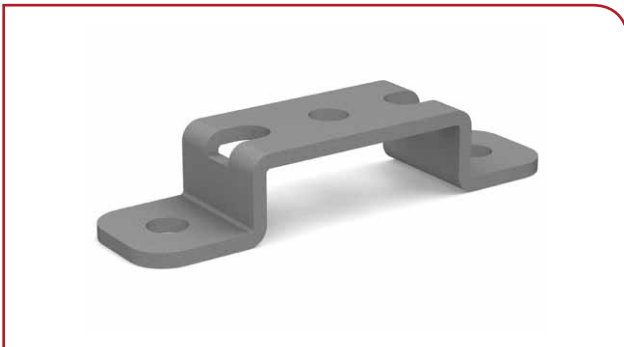


Dimensions LxWxH [mm]	Packaging unit [PU]	Part number/PU
40 x 17 x 12	10 units	442015

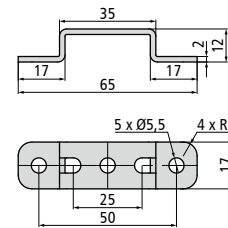


- Steel 2 mm galvanised and powder-coated RAL 9006
- Suitable for M5 screw mounting in 25 mm raster
- Low installation height of 12 mm
- For profile and wall mounting

SHEET METAL ANGLE LW 50

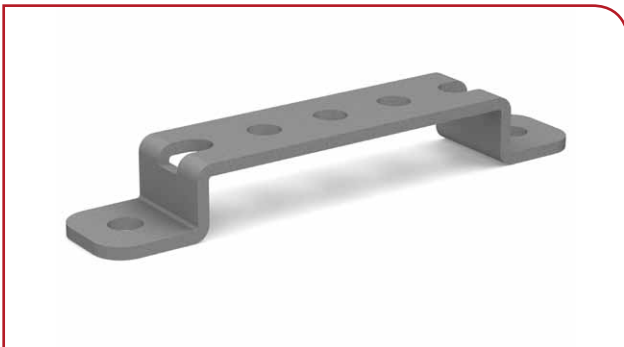


Dimensions LxWxH [mm]	Packaging unit [PU]	Part number/PU
65 x 17 x 12	10 units	442016

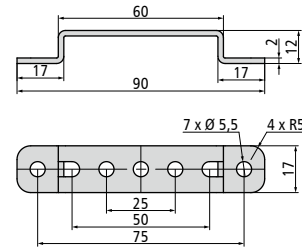


- Steel 2 mm galvanised and powder-coated RAL 9006
- Suitable for M5 screw mounting in 25 mm raster
- Low installation height of 12 mm
- For profile and wall mounting

SHEET METAL ANGLE LW 75

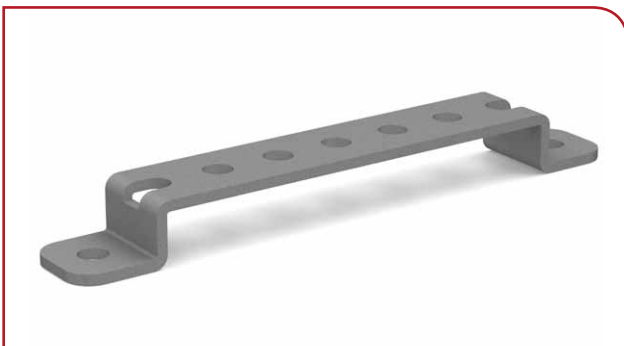


Dimensions LxWxH [mm]	Packaging unit [PU]	Part number/PU
90 x 17 x 12	10 units	442017

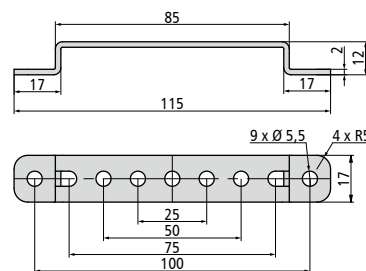


- Steel 2 mm galvanised and powder-coated RAL 9006
- Suitable for M5 screw mounting in 25 mm raster
- Low installation height of 12 mm
- For profile and wall mounting

SHEET METAL ANGLE LW 100



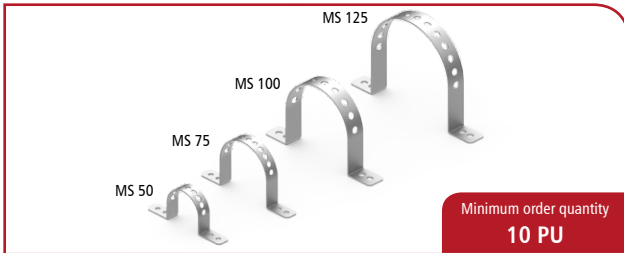
Dimensions LxWxH [mm]	Packaging unit [PU]	Part number/PU
115 x 17 x 12	10 units	442018



- Steel 2 mm galvanised and powder-coated RAL 9006
- Suitable for M5 screw mounting in 25 mm raster
- Low installation height of 12 mm
- For profile and wall mounting

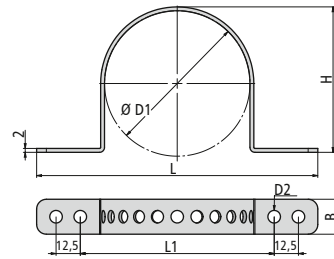


MOUNTING CLAMP MS



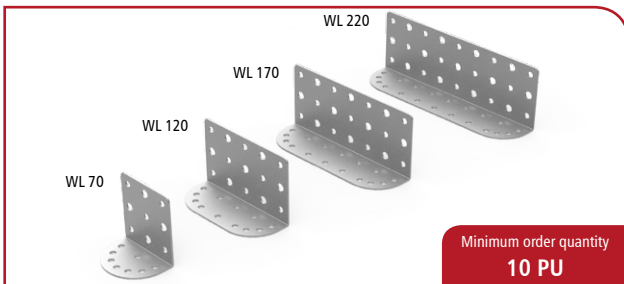
Minimum order quantity
10 PU

PU 2 units	L x W x H [mm]	L1 [mm]	D1 [mm]	D2 [mm]	Part no./PU
MS 50	120 x 18 x 50	75	50	6.5	442010
MS 75	145 x 18 x 75	100	75	6.5	442011
MS 100	175 x 25 x 100	125	100	8.5	442012
MS 125	200 x 25 x 125	150	125	8.5	442013



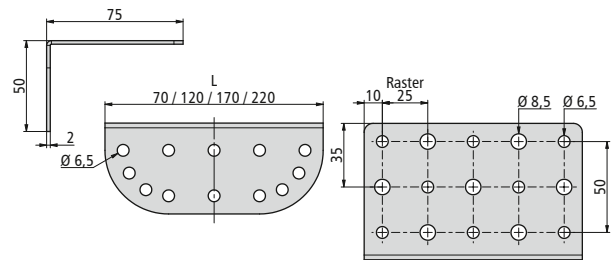
- Punched bending plate 2 mm
- 4 different versions
- powder-coated white aluminium
- Fixing holes $\varnothing 6.5$ and $\varnothing 8.5$ mm

ADJUSTMENT ANGLE WL



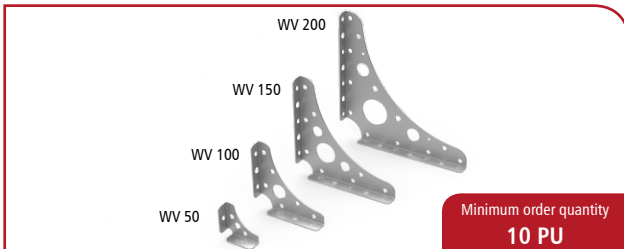
Minimum order quantity
10 PU

	WL 70	WL 120	WL 170	WL 220
Packaging unit [PU]	2	2	2	2
Part number/PU	209001 0187	209001 0188	209001 0189	209001 0190



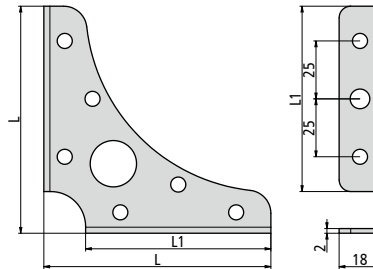
- Punched bending plate 2 mm
- 4 different versions
- powder-coated white aluminium
- Fixing holes $\varnothing 6.5$ and $\varnothing 8.5$ mm

CONNECTING ANGLE WV



Minimum order quantity
10 PU

PU 2 units	L [mm]	L1 [mm]	Part no./PU
WV 50	48	40	209001 0168
WV 100	98	80	209001 0170
WV 150	148	130	209001 0169
WV 200	198	170	209001 0171



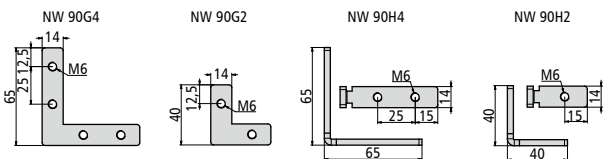
- Punched bending plate 2 mm
- 4 different versions
- powder-coated white aluminium
- Fixing holes $\varnothing 6.5$ and $\varnothing 8.5$ mm

GROOVE ANGLE NW



Minimum order quantity
10 PU

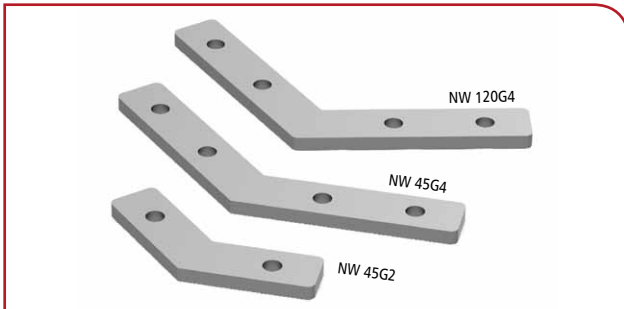
PU 10 units	NW 90H2	NW 90H4	NW 90G2	NW 90G4
Part no./PU	209001 0154	209001 0155	209001 0150	209001 0151



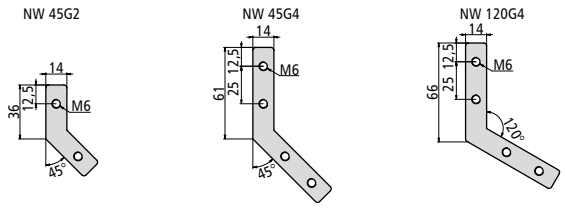
- Groove angle for connecting aluminium T-slot profiles
- 4 different versions in two lengths each
- Flat and upright design material: Steel, 4 mm
- For 45°, 90° and 120° connections incl. M6 grub screw



GROOVE ANGLE NW



PU 10 units	NW 45G2	NW 45G4	NW 120G4
Part no./PU	209001 0152	209001 0153	209001 0259

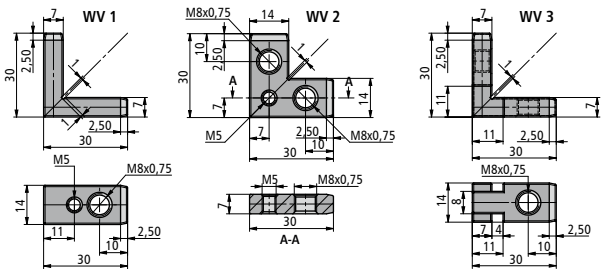


- Groove angle for connecting aluminium T-slot profiles
- 4 different versions in two lengths each
- Flat and upright design material: Steel, 4 mm
- For 45°, 90° and 120° connections incl. M6 grub screw

ANGLE CONNECTOR WV 1, WV 2 and WV 3

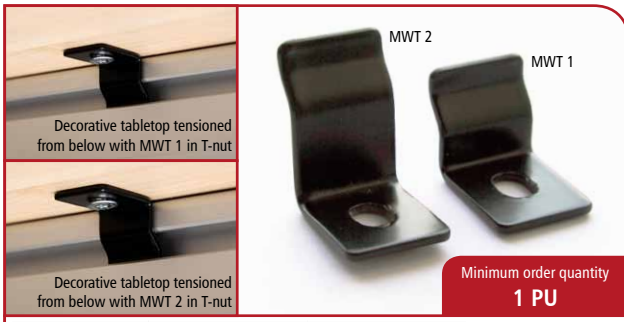


	Part no./PU 20	Part no./PU 100
WV 1	209001 0280	209001 0281
WV 2	209001 0282	209001 0283
WV 3	209001 0284	209001 0285

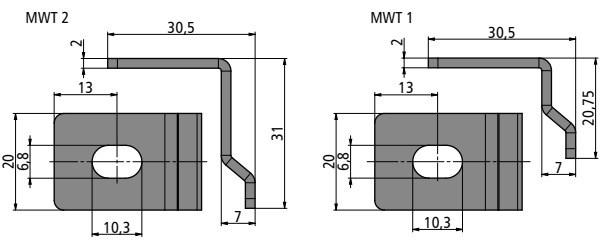


- Material: Die cast aluminium, 7 mm
- WV 1: 2 x thread M8 x 0.75 and 2 x M5
- WV 2: 2 x thread M8 x 0.75 and 1 x M5
- WV 3: 2 x thread M8 x 0.75

MOUNTING ANGLE TABLE



MW table	Packaging unit [PU]	Part no./unit
MWT 1	50 units	443108
MWT 2	50 units	443109

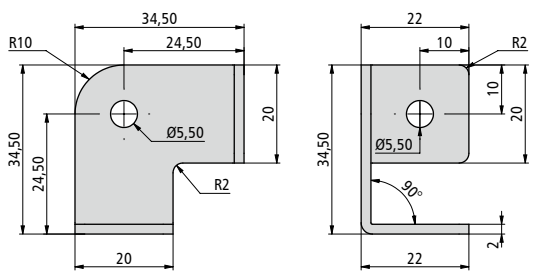


- Easy mounting of decorative plates and clamping profiles
- 2 mm steel sheet, powder-coated black
- MWT 1 for PR 30
- MWT 2 for PV 51, PV 53, PV 54, PV 56

CONNECTION ANGLE TABLE



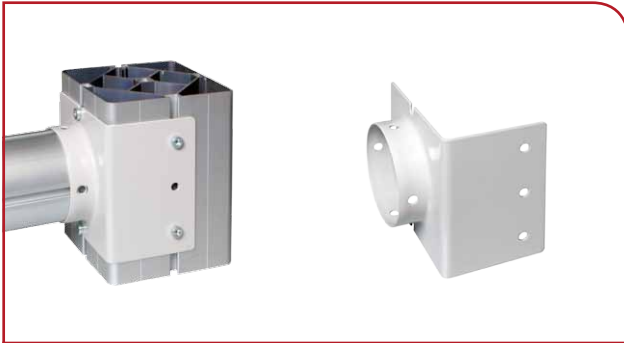
	Packaging unit [PU]	Part no./PU
VW table	2 units	209001 0192



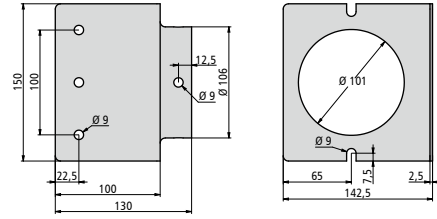
- Suitable for fixing with three points across corner
- 2 mm steel sheet, powder-coated RAL 9006
- Fixing holes Ø5.5
- Angle 3 x 90°



MONTAGE CLAMP PH 100/PS 150



Mounting clip	Part no./unit
PH 100/PS 150	443125 0001

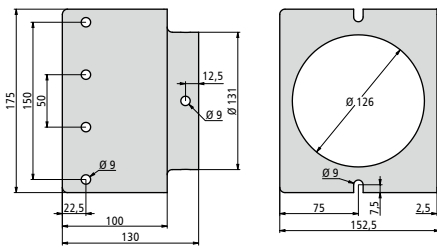


- Connects stand profile PS 150 to hollow profile PH 100
- Deep-drawn solid 2.5 mm steel sheet, powder-coated
- Fixed screw connections M8 screws and T-slot nuts
- Free positioning of profiles without additional holes

MOUNTING CLAMP PH 125/PS 150

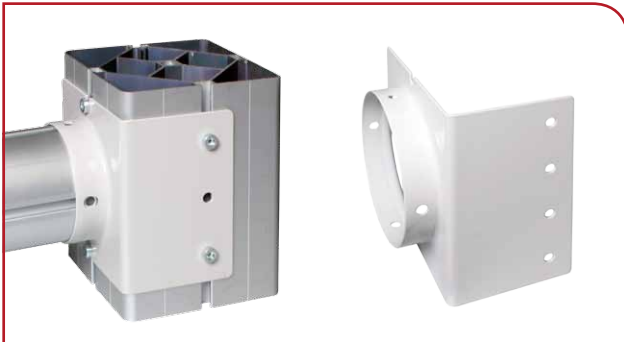


Mounting clip	Part no./unit
PH 125/PS 150	443125 0002

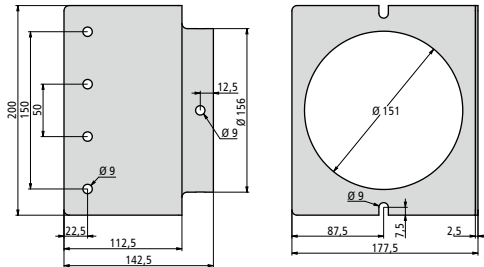


- Connects stand profile PS 150 to hollow profile PH 125
- Deep-drawn solid 2.5 mm steel sheet, powder-coated
- Fixed screw connections M8 screws and T-slot nuts
- Free positioning of profiles without additional holes

MOUNTING CLAMP PH 150/PS 175



Mounting clip	Part no./unit
PH 150/PS 175	443125 0003

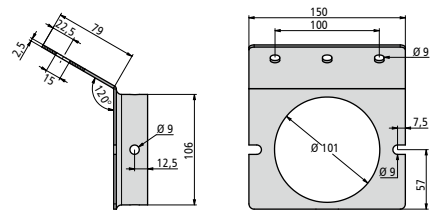


- Connects stand profile PS 175 to hollow profile PH 150
- Deep-drawn solid 2.5 mm steel sheet, powder-coated
- Fixed screw connections M8 screws and T-slot nuts
- Free positioning of profiles without additional holes

MOUNTING CLAMP PH 100/PS 200-6



Mounting clip	Part number
PH 100/PS 200-6	443125 0004



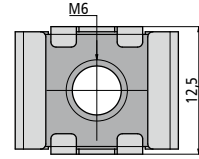
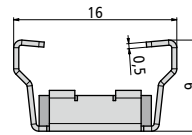
- Connects stand profile PS 200-6 to hollow profile PH 100
- Deep-drawn solid 2.5 mm steel sheet, powder-coated
- Fixed screw connections M8 screws and T-slot nuts
- Free positioning of profiles without additional holes

CEILING CLAW for SUSPENDED CEILING / RASTER CEILING T14



Minimum order quantity
1 PU

	Packaging unit [PU]	Part number/unit
Ceiling claw T14	100 units	892345 0476



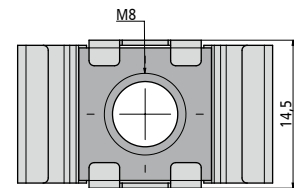
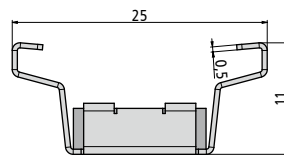
- Dimensions: W 16 x D 12.5 x H 9 mm
- Spring steel sheet and steel galvanised
- Retrospective positioning possible
- Free and secure mounting by self-clamping for T14 ceiling systems

CEILING CLAW for SUSPENDED CEILING / RASTER CEILING T24



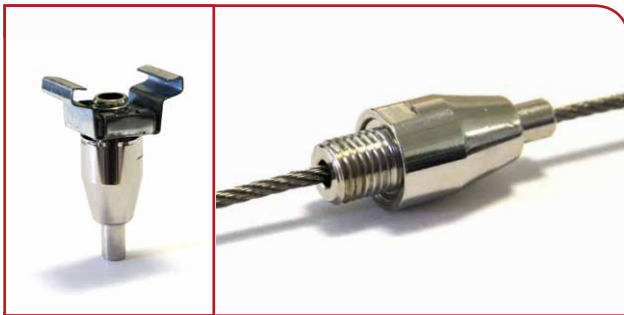
Minimum order quantity
1 PU

	Packaging unit [PU]	Part number/unit
Ceiling claw T24	100 units	892346 0477

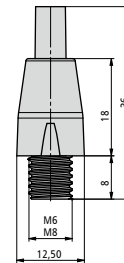


- Dimensions: W 25 x D 14.5 x H 11 mm
- Spring steel sheet and steel galvanised
- Retrospective positioning possible
- Free and secure mounting by self-clamping for T24 ceiling systems

Adjustable WIRE SUSPENSION, rear exit



Wire suspension R	Part number/unit
M6	442038
M8	442039

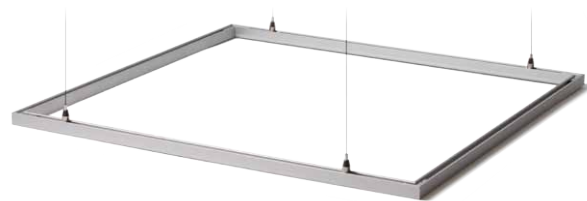


- 3-ball tensile spring clamping, manually adjustable height
- Rear exit for hidden wire guide
- Wire suspension for 2 mm wire
- Tested tensile load 12 kg with 2 mm stainless steel wire, fastening screw thread M6, material: chromed steel

Adjustable WIRE SUSPENSION, lateral exit



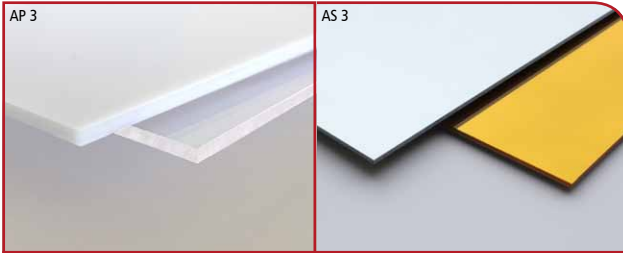
Wire suspension S	Part number/unit
M5	442101
M6	442102
M8	442103



- 3-ball tensile spring clamping, manually adjustable height
- Lateral exit for simple height adjustment
- Wire suspension for 2 mm wire
- Tested tensile load 12 kg with 2 mm stainless steel wire, fastening screw thread M5, M6, M8, material: chromed steel



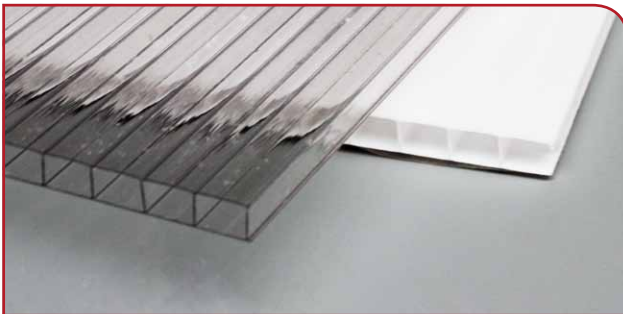
ACRYLIC SHEET GLASS and ACRYLIC SHEETS



	Dimensions [mm]	Part number
AP 3, white	2440 x 1220 x 3	209001 0206
AP 3, transparent		209001 0207
AS 3, gold		209001 0208
AS 3, silver		209001 0209

- Acrylic sheet glass and acrylic sheets 3 mm with protective foil
- Colours: white, transparent, gold and silver
- Dimensions L 2440 x W 1220 mm
- Weight: approx. 3.6 kg/m², approx. 10.72 kg/sheet

MULTI-SKIN SHEETS SP 8



	Dimensions [mm]	Part number
SP 8, white	6000 x 2100 x 8	209001 0204
SP 8, transparent		209001 0205

- Multi-skin sheets 8 mm made of polycarbonate, with protective foil on both sides
- Colour: transparent and white
- Dimensions L 6000 x W 2100 mm
- Weight: approx. 1.2 kg/m²

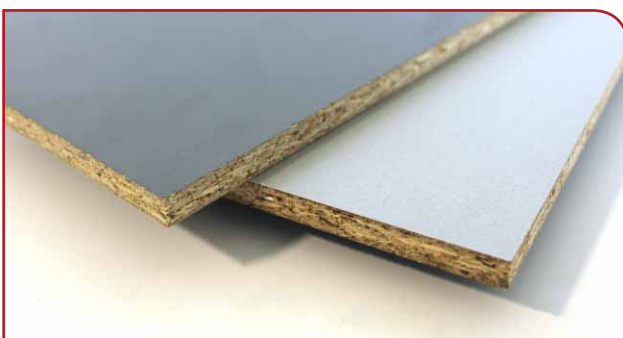
FOAM SHEETS CP 5 and 8



	Dimensions [mm]	Part number
CP 8, white	2500 x 1220 x 8	209001 0202
CP 5, red	2500 x 1220 x 5	209001 0203

- Foam sheets 5 and 8 mm (with protective foil on both sides)
- Colour: white and red, printable
- Dimensions L 2500 x W 1220 mm
- Weight: approx. 4.8 kg/m²

DECORATIVE PLATES DP 8



DP 8	Dimensions [mm]	Part number
white aluminium / volcanic grey	2655 x 2100 x 8	209001 0201

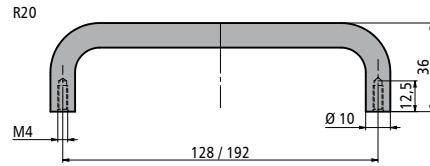
- Melamine resin panels 8 mm
- volcanic grey / white aluminium
- Dimensions L 2655 x W 2100 mm
- Weight: approx. 6 kg/m²

EG 10

EG 10-1
EG 10-2

Minimum order quantity
10 PU

	Packaging unit [PU]	Part number/PU
EG 10-1	2	209001 0064
EG 10-2	2	209001 0065



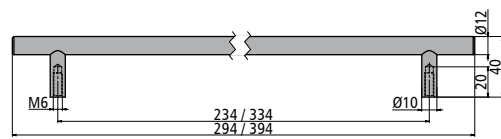
- Brushed stainless steel handles Ø 10 mm incl. fixing screws
- Thread: M4; thread pitch: 128 mm or 192 mm
- Height: 35 mm; total length: 138 mm or 202 mm
- Connection diameter: 10 mm

EG 12

EG 12-1
EG 12-2

Minimum order quantity
5 PU

	Packaging unit [PU]	Part number/PU
EG 12-1	2	209001 0066
EG 12-2	2	209001 0067



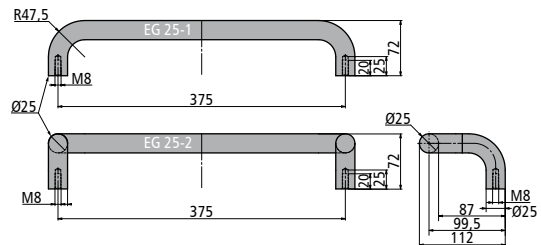
- Brushed stainless steel handles Ø 12 mm incl. fixing screws
- Thread: M6; thread pitch: 234 mm or 334 mm
- Height: 40 mm; total length: 294 mm or 394 mm
- Connection diameter: 9.75 mm

EG 25

EG 25-1
EG 25-2

Minimum order quantity
1 PU

	Packaging unit [PU]	Part number/PU
EG 25-1	1 set (le+ri)	209001 0068
EG 25-2	1 set (le+ri)	209001 0069



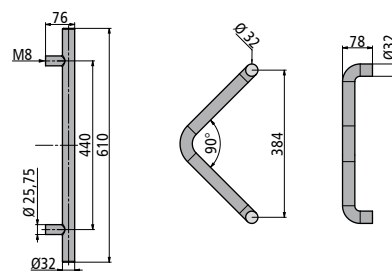
- Brushed stainless steel handles Ø 25 mm incl. fixing screws
- Thread: M8; thread pitch: 375 mm
- Height: 72 mm; total length: 400 mm
- Connection diameter: 25 mm

EG 32

EG 32-1
EG 32-2

Minimum order quantity
1 PU

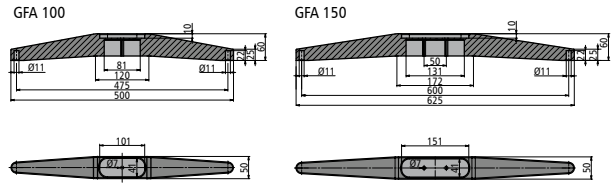
	Packaging unit [PU]	Part number/PU
EG 32-1	1 set (le+ri)	209001 0070
EG 32-2	1 set (le+ri)	209001 0071



- Brushed stainless steel handles Ø 32 mm incl. fixing screws
- Thread: M8; thread pitch: 440 mm or 384 mm
- Height: 76 mm or 78 mm. total length: 610 mm or 420 mm
- Connection diameter: 25.25 mm or 32 mm



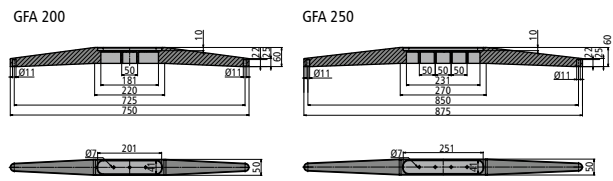
GFA 100, 150 – chrome and grey



	Packaging unit [PU]	Weight	Part no./PU
GFA 100, RAL 9006	2	0.69 kg	442077
GFA 100, chrome	2	0.69 kg	442078
GFA 150, chrome	1	0.86 kg	442078 0002

- Die cast aluminium feet, polished chrome or RAL 9006
- Length 500 / 625 mm, width 50 mm with holes Ø 7 mm
- Hole Ø 11 mm for pluggable castors and base
- Vertical stand shape for PV 100 and PV 150

GFA 200, 250 - chrome



	Weight	Part no./unit
GFA 200, chrome	1.03 kg	442078 0001
GFA 250, chrome	1.16 kg	442078 0003

- Die cast aluminium feet, polished chrome
- Length 750 / 875 mm, width 50 mm with holes Ø 7 mm
- Hole Ø 11 mm for pluggable castors and base
- Vertical stand shape for PV 200 and PV 250

CASTORS LRS 50 and LRS 75, pluggable



	[PU]	Load capacity [kg]	Diameter [mm]	Part no./PU
LRS 50 without brake	20	approx. 45	Ø 50	609048 0010
LRS 50 with brake	20			609048 0011
LRS 75 without brake	20	approx. 60	Ø 75	609048 0002
LRS 75 with brake	20			609048 0003

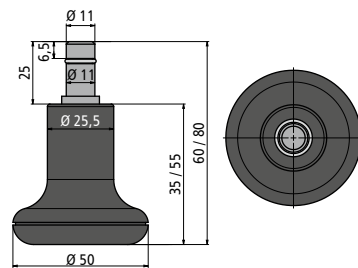
- Plastic castors, grey/black
- Pluggable fastening Ø 11 mm
- Castors Ø 50 and 75 mm with soft PVC
- With and without locking brake

FLOOR GLIDES BG 50, plug-in



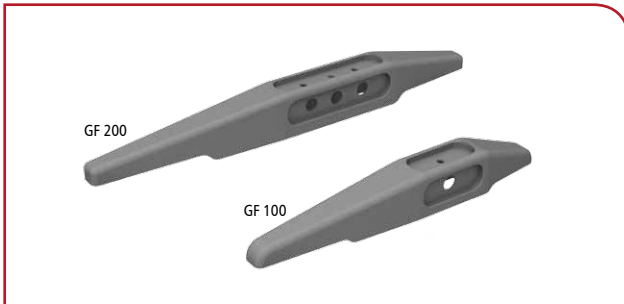
Minimum order quantity
40 units

	Diameter [mm]	Height [mm]	Part no./1 unit
BG 50, short	Ø 50	60	209001 0217
	Diameter [mm]	Height [mm]	Part no./4 unit
BG 50, high	Ø 50	80	609035 0002

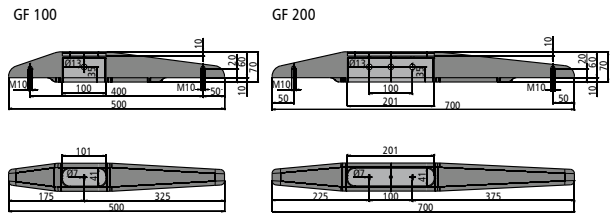


- Floor glides with D11 locking pins galvanised steel
- Secure standing position for office chairs and tables
- Plastic foot suitable for all floors
- Can be changed quickly thanks to plug connection

GF 100 and GF 200, grey

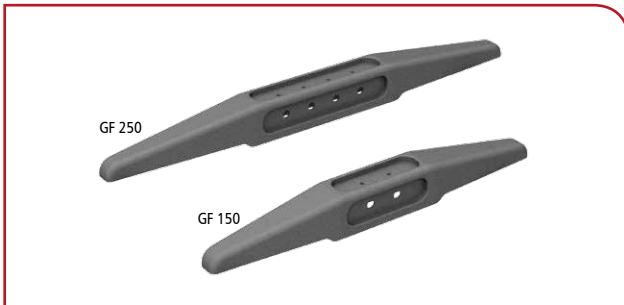


	Packaging unit [PU]	Weight	Part no./PU
GF 100	2	0.91 kg	442073
GF 200	2	1.35 kg	442075

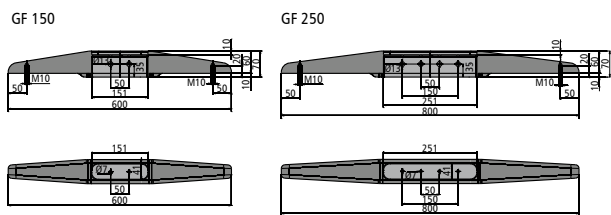


- Die cast aluminium feet, grey aluminium (RAL 9007)
- Length 500 / 700 mm, width 65 mm with holes
- M10 thread for castors and bases
- Horizontal and vertical fixing for PV 100 and PV 200

GF 150 and GF 250, grey



	Packaging unit [PU]	Weight	Part no./PU
GF 150	2	1.09 kg	442074
GF 250	2	1.44 kg	442076



- Diecast aluminium feet, grey aluminium (RAL 9007)
- Length 600 / 800 mm, width 65 mm with holes
- M10 thread for castors and bases
- Horizontal and vertical fixing for PV 150 and PV 250

CASTORS LRG 75



	[PU]	Load capacity [kg]	Dimensions [mm]	Part no./PU
LRG 75 without brake	4	approx. 60	Ø 75 x H 102 x B 56	209001 0079
LRG 75 with brake	4			209001 0083

- Plastic castors, grey/black
- Fastening screw thread M10
- Castors Ø 75 mm with soft PVC
- With and without locking brake

CASTORS LRG 100



	[PU]	Load capacity [kg]	Dimensions [mm]	Part no./PU
LRG 100 without brake	4	approx. 80	Ø 100 x H 125 x B 56	209001 0081
LRG 100 with brake	4			209001 0085

- Plastic castors, grey/black
- Fastening screw thread M10
- Castors Ø 100 mm with soft PVC
- With and without locking brake



MH 243



	Weight [g]	Swivel radius [mm]	Part no./unit
MH 243	500	78	442047

- Swivelling monitor bracket for 10" to 32" screens
 - Tilt angle -5° to 15°, rotation -5° to 5°
 - 2-hole mounting with plug-in module, max. load: 15 kg
 - Monitor mount VESA 75x75 and 100x100
- Aluminium, silver powder-coated

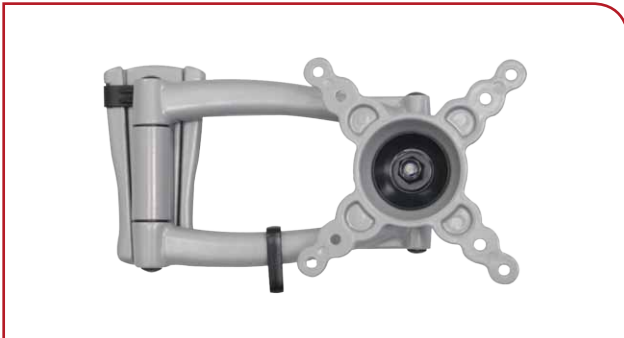
MH 242



	Weight [g]	Swivel radius [mm]	Part no./unit
MH 242	650	78 – 190	442046

- Swivelling monitor bracket for 10" to 32" screens
 - Tilt angle -5° to 15°, rotation -5° to 5°
 - 2-hole mounting with plug-in module, max. load: 15 kg
 - Monitor mount VESA 75x75 and 100x100
- Aluminium, silver powder-coated

MH 244



	Weight [g]	Swivel radius [mm]	Part no./unit
MH 244	760	78 – 225	442048

- Swivelling monitor bracket for 10" to 32" screens
 - Tilt angle -5° to 15°, rotation -5° to 5°
 - 2-hole mounting with plug-in module, max. load: 15 kg
 - Monitor mount VESA 75x75 and 100x100
- Aluminium, silver powder-coated

MH 241



	Weight [g]	Swivel radius [mm]	Part no./unit
MH 241	900	78 – 330	442045

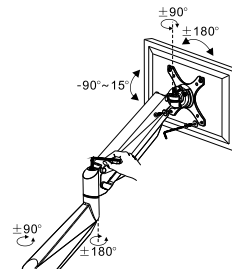
- Swivelling monitor bracket for 10" to 32" screens
 - Tilt angle -5° to 15°, rotation -5° to 5°
 - 2-hole mounting with plug-in module, max. load: 15 kg
 - Monitor mount VESA 75x75 and 100x100
- Aluminium, silver powder-coated



MHT 9 / MHT 20



	Part number
MHT 9	442108
MHT 20	442108 0001

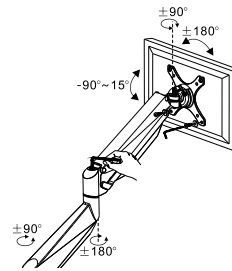


- Swivelling and liftable monitor bracket for monitors up to 42"
- Tilt angle -90° bis 15°, rotation $\pm 180^\circ$
- Table mount, max. load: MHT 9 kg / MHT 20 kg
- Monitor mount VESA 75x75 and 100x100

MHW 9 / MHW 20



	Part number
MHW 9	442107
MHW 20	442107 0001



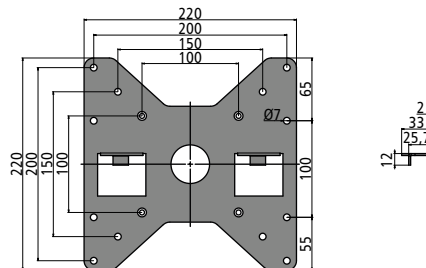
- Swivelling and liftable monitor bracket for monitors up to 42"
- Tilt angle -90° bis 15°, rotation $\pm 180^\circ$
- Table mount, max. load: MHW 9 kg / MHW 20 kg
- Monitor mount VESA 75x75 and 100x100

MOUNTING ANGLE MONITOR, small

Double sided mounting with edging profile PT 4 in standard T-slot



	Part no./unit
MW monitor, small	586400 2839



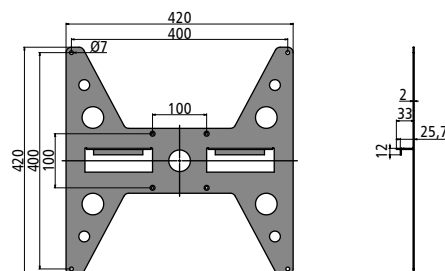
- Monitor mount VESA 100, 150 and 200
- 2 mm steel sheet, powder-coated black
- Can be suspended in PH 50, PV 50-1, PV 100-2, PV 150-3 and PV 200-4
- Suitable for VESA 100 monitor brackets

MOUNTING ANGLE MONITOR, large



Figure without SMART-TV and monitor bracket

	Part no./unit
MW monitor, large	586400 2838



- Monitor mount VESA 100 and 400
- 2 mm steel sheet, powder-coated black
- Can be suspended in PH 50, PV 50-1, PV 100-2, PV 150-3 and PV 200-4
- Suitable for VESA 100 monitor brackets



EXHIBITION KITCHEN WITH COUNTER TOP

The basic thinking behind developing an **exhibition kitchen** was to provide a kitchen for exhibitions, functions and events which feature high transportability, simple installation and simple/easy set-up and dismantling, but does not lose the functionality of a kitchen. By using different aluminium T-slot profiles in connection with hard-wearing melamine panels, the kitchen can vary as much as desired. Adapt to other media content by simply replacing the advertising banners.



Counter top with 3 x 24" monitors and cabinet on castors



CNC MILLING MACHINES

- Space saving and productive
- Set-up in rooms with normal door width
- Solid aluminium construction
- Linear units with steel rail guides and ball screw spindles
- Operation via 10" touch panel
- Processing of plastics, wood, aluminium and non-ferrous metals
- Areas of application: 3D printing, laser, milling and metering technology and much more.

Traversing ranges:

MiniHead X 300 / Y 500 / Z 400 mm

MiniFlat X 300 / Y 600 / Z 200 mm



The **TM 240 torque motors** with direct drive and large hollow shafts are suitable for diverse tasks due to their high torque, extremely stiff holding torque and a resolution of 840,000 incr./turns. Particularly in CNC machines for turning units (4th and 5th axis) in which high stiffness, balance quality and zero backlash are required.



INFO AND STANDING DESK



Info desk set 1:
Standing desk 1 with desk pad, keyboard and mouse, 1-arm monitor bracket, 1 x 24" monitor, mini PC 1, leaflet dispensers DIN long, DIN A5 and business card holders



Info desk set 2:
Standing desk 2 with desk pad, mouse and keyboard, 2-arm monitor bracket, 2 x 24" monitor, mini PC 1, leaflet dispensers DIN long, DIN A5 and business card holders



- Anodised aluminium frame made of 4 T-slot profiles, desk height 1050 mm, desk width 800 / 1200 mm
- 2 polished chrome die cast aluminium feet W 50 x L 600 mm with 4 castors Ø 50 mm, 2 with brake
- 1 perforated plate W 450 x L 600/900 x 1.5 mm steel powder-coated grey, raster 38 mm
- Decorative swivel panel, 28 mm thick, two-tone: maple / white aluminium, W 600 x 800 / 1200 mm



SALES AND MAGAZINE RACKS



- Two aluminium base frames in two standard heights L 600 / 900 mm, H 1300 / 1650 mm with die cast feet
- Stand profile with profile covers W 100 mm, H 1200 / 1500 mm Connection profiles W 50 / 100 mm, L 600 / 900 mm
- Fixing profiles L 600 / 900 mm for DIN long / DIN A5 Perforated sheet / slotted sheet 1.5 mm, W 620 / 920 x H 450 mm
- Die cast polished W 50 x H 75 x L 500 mm, with castors Ø 75 mm and supporting feet Ø 50 mm



A

Accessories	23, 24, 25, 26, 27, 28, 29, 30, 31, 32, 33
Acrylic plate glass	34
Acrylic sheets	34
Adjusting angle	27
Adjustment angle	30
Alu-T-Profiles	
Angle profiles	6, 7, 8, 9, 10, 11
Clamping profiles	21
Connection profiles	6, 7, 8, 9, 10, 11
Frame profiles	12, 13, 15
Hollow profiles	19
Mounting profiles	20
Rectangular profiles	14
Slide-in profiles	24
Stand profiles	15, 16, 17, 18
Angle connector	30

C

Castors	36
Ceiling claw	33
Clamping connector	30, 31
Cover profile	6, 7, 12, 13, 16

D

Decorative plates	34
Die cast aluminium feet	36, 37
Die cast feet	36, 37

E

Edging band	25
Edging profile	
Slide-in profile	25

F

Floor glides	36
Foam sheets	30, 32

G

Groove angle	38, 39
--------------	--------

L

Linear guides	36, 37
Locking brake	
Frame feet	24

M

Melamine resin panels	36, 37
Monitor bracket	34
Mounting clip	39
Multi-skin sheets	34

P

Plastic castors	36, 37
-----------------	--------

S

Sheet metal angle	29
Sliding nut	36, 37
Stainless steel handles	35

T

Table connection angle	34
Table mounting angle	26
T-slot cover	31
T-slot covers	31
T-slot nut	25

W

Wire suspension	33
-----------------	----

PROGRAM OF THE *isel*-GROUP

development, production and sales of components and systems
in the sectors
mechanics, electronics, software, systems, display and lifestyle



ASSEMBLY and PRODUCTION TABLES

The modular design of the assembly and production tables with T-groove profiles enables an industry-independent use with many variants. Functionality and flexibility are significantly increased in silver gray or stainless steel finish by the use of punch and gill plates. The optional hood shall provide additional security and standing next to the information desk is used for additional networking.



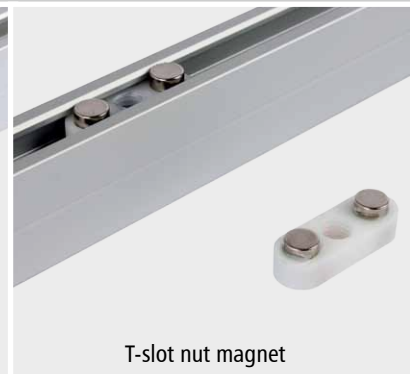
Clamping connector SV2



Angle connector WV 1



Angle connector WV 2



T-slot nut magnet

iselGermanyAG

a company of the isel group

info@isel.com

www.isel.com/germany

showroom and sales:
Adam-von-Trott-Straße 6/8
13627 Berlin
Tel.: +49 (0) 30 34099-134

online shop and distribution:
Friedländer Weg 37
36132 Eiterfeld
Tel.: +49 (0) 6672 898-600